



1948

Wildcat Yearbook

Carrizo Springs CISD

The Wildcat



1

9

4

8

1948 Wildcat Yearbook

Prop. of
Annual staff.



THE WILDCAT 1948



Official Student Publication of Carrizo Springs

High School



SPONSOR	EDITOR	BUSINESS MANAGER
HOMER UTLEY	PAUL GARDNER	ALTON RUFF



PHOTOGRAPHY BY WILLEMS' STUDIO



PUBLISHED BY THE STECK COMPANY

OUR THEME

In keeping with the styles of the day the Wildcat staff has chosen as its theme the era of the Gay Nineties. The traditional coquettish Gibson Girls are portrayed by our co-eds, the proverbial hero by the campus wolf and the hissed villain by the cold-hearted faculty. It is our hope that in future decades the high-lights of this present day may return to charm you just as the modes of the Gay Nineties have charmed us.

PICTORIAL





HOMECOMING QUEEN
COLLEEN KELLOGG

HOMECOMING DUCHESSES



JEANNE WITHINGTON

BETTY JO TUMLINSON

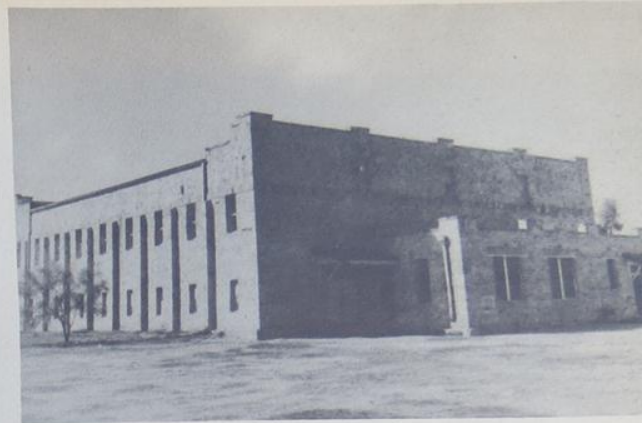




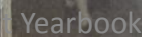
CAMPUS



VIEWS











SPORTS



FOOTBALL



First row: Dickens, Santoya, Wilson, J. Lansford, Logan, Farris, Coleman.
 Second row: Erickson, B. Lansford, Fain, Brady, Gardner, Howard, Tumlinson.
 Third row: Harding, Sallee, Marshall, Knaggs, Vivian, Veloz, Moulder.
 Fourth row: Coach Carpenter, Allen, Duran, Juarez, Saenz, Coach Darr.

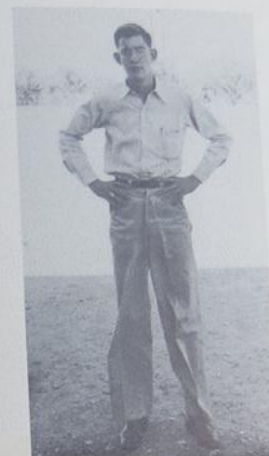
FOOTBALL SCHEDULE

Sept. 19 - Cotulla	0	Here	60	Oct. 24 -	Open Date
Sept. 26 - Pearsall	34	Here	19	Oct. 31 - Uvalde	0 Here 7
Oct. 3 - Del Rio	0	There	20	Nov. 7 - Crystal	7 There 28
Oct. 10 - San Felipe	6	Here	26	Nov. 14 - Hondo	12 There 19
Oct. 17 - Eagle Pass	0	Here	41	Nov. 21 - Devine	7 Here 28
Bi-District - Karnes City	21	There	31	Regional - Weslaco	6 Here 6

Wes Carpenter	Head Coach	Co-Captain	Jimmy Lansford
Ray Darr	Assistant Coach	Co-Captain	Joe Farris



Coach
Wesley Carpenter



Mgr.
Leon Logan



Asst. Coach
Ray Darr

Line-up



REGIONAL CO-CHAMPIONS



SENIOR LETTERMEN



Brady



Farris



Lansford



Logan



Poucher



Erickson



Fain



Sallee

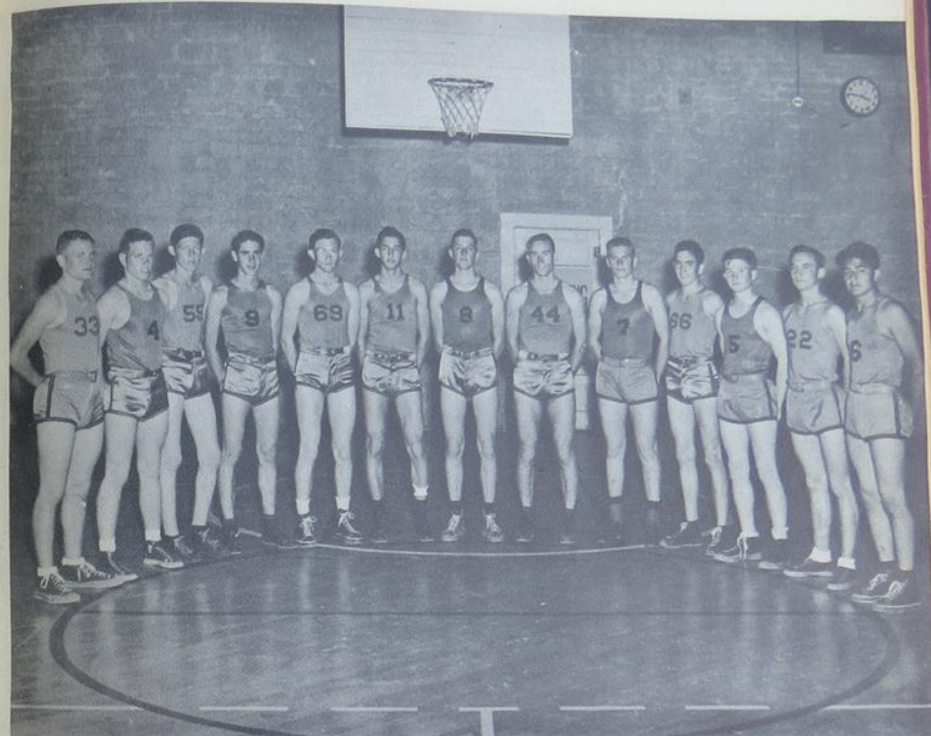


Wilson



Gardner

BASKETBALL BOYS



Fain, Gardner, Jackson, Kammer, Brady, Farris, Knaggs, Molder, Lansford, Wilson, Johnson, Logan, Esquivel.

*Uvalde	22	- Carrizo	26	Jan. 9, 1948
*Del Rio	15	- Carrizo	40	Jan. 16
*Eagle Pass	27	- Carrizo	31	Jan. 20
*Devine	27	- Carrizo	21	Jan. 23
*Hondo	21	- Carrizo	28	Jan. 30
St. Joseph	36	- Carrizo	38	Feb. 3
*Eagle Pass	24	- Carrizo	27	Feb. 6
*Hondo	26	- Carrizo	50	Feb. 10
*Uvalde	26	- Carrizo	22	Feb. 11
*Devine	32	- Carrizo	42	Feb. 18
*Del Rio	13	- Carrizo	23	Feb. 19

BASEBALL



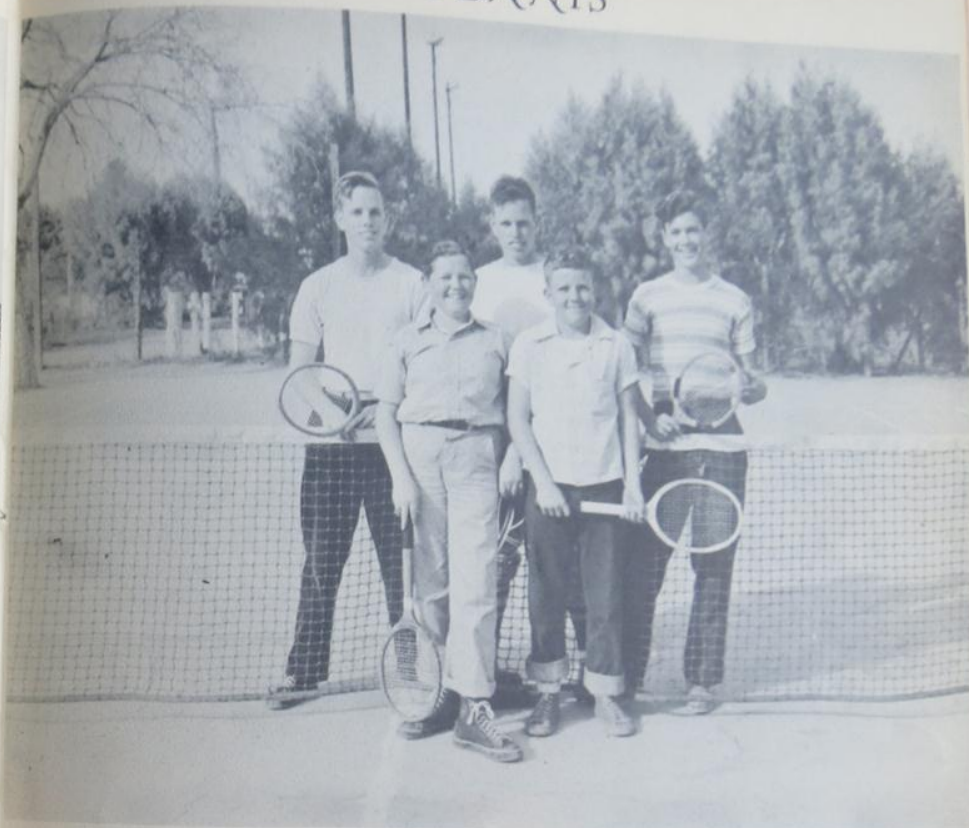
First row: Knaggs, Pincer, Saenz, Logan, Fain, Santoya, Johnson.
Second row: Brady, Castellanos, Jackson, Farris, Gardner, Esquivel,
Mgr. Duran.

SCHEDULE

March 31 - Hondo at Carrizo
April 7 - Carrizo at Devine
April 13 - Carrizo at Uvalde
April 16 - Eagle Pass at Carrizo

April 28 - Carrizo at Hondo
May 5 - Devine at Carrizo
May 12 - Uvalde at Carrizo
May 18 - Carrizo at Eagle Pass

TENNIS



Gardner, Gardner, Ruff, Braswell, Tumlinson

Not pictured - Jerry House, John Jackson

District Champions in senior doubles, senior singles, junior doubles,
and junior singles.



GIRL'S BASKETBALL

Tumlinson, Castellanos, Gonzales, Cardenas, Moorman, Logan, White, Burton, Patrick, Withington, Smith, Kellogg.

STARTING



Joy Ray Logan

LINE-UP



Mary Cardenas



Nancy Burton



Betty Jo Tumlinson



Colleen Kellogg



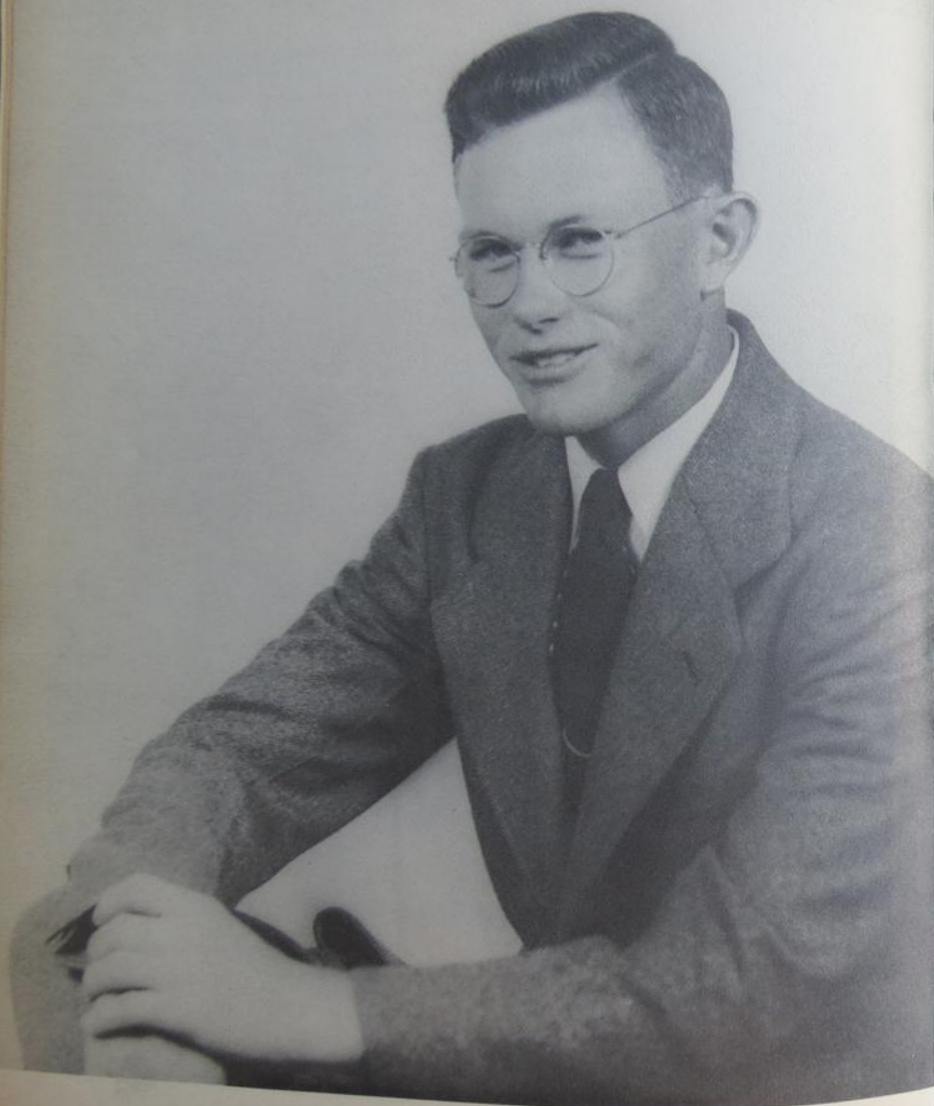
Peggy White



Jacquie Patrick

ACTIVITIES





BEST ALL AROUND BOY
RICHARD BRADY



BEST ALL AROUND GIRL
COLLEEN KELLOGG

F. F. A.



First row: Ando, Kammer, Frazier (Treas.), Castellanos, F. Cortez, E. Duran, Jackson, D. Tumlinson, House.

Second row: Guerrero, Dickens (Sec.), Salinas, Altman, Moffett, Kellogg (Sweetheart), Knaggs (Pres.), Withington (Sweetheart), L. Tumlinson, Logan, Coleman, Harding (V. Pres.).

Third row: F. Garza (Sent.), Cook (Rep.), Lackey (3rd V. Pres.), Johnson, J. Garza, (Parl.), Welborn, Howard, Lansford, Smith (2nd V. Pres.), Lester (Sponsor).

F. H. A.



Third row: Berumen, Saenz, Moorman, M. Sharp, Mangum, Pond, L. Sharp (Treas.), H. White (V. Pres., Dist. Song Leader), P. White, Kirk (Reporter), Lansford, Logan (Parl.), Willems, Walker (Sponsor).

Second row: Hunt, Warren, Jackson, Rouse, Ibarra, Gonzales, Pickett, Weatherford, Withington, C. Hansen, Ramsey, M. Hansen, Tollet, Patrick, R. Harris.

First row: Fernandez, Lopez, Castellanos, J. Harris (Sec.), Smith, Butler, Tumlinson, (Pres.), Garrison, Eardley, Kellogg, L. Hansen, Wilson, Nix.

"We are the Future Homemakers of America. We face the future with courage and hope, We are the builders of homes, homes for America's Future. Homes where Living will be the expression of everything that's good and fair, homes where truth, love, security and faith will be realities not Dreams."

CHORAL CLUB



Director
Miss Geraldine Lane

First row: Wilson, Jackson, Weatherford, Mangum, Smith, Harris, Gardner, Fain, Johnson, Butler, Withington (V. Pres.), Umphres, Tumlinson, Hunt, Eardley, Braswell.

Second row: Sharp, Rouse, P. White, H. White, Harrell, Harris (Treas.), Cragg (Sec.), Upchurch, Bradshaw, Gardner, Ruff (Pres.), Farris, Leonard, Kammer, Bramblett, Kellogg, Patrick, Lansford, Pickett, Kirk, Sharp, Cardenas, Pond, Tollett.

Third row: Oliver, Wilson, Dean.



GIRL'S TRIO NO. 1

Nan Harrell, Jeanne Withington, Mary Oliver



GIRL'S TRIO NO. 2

Gay Kirk, Carmen Smith, Hazel White



BOYS QUARTET

Standing: Jimmie Dean and Alton Ruff.
Sitting: Ralph Wilson and Paul Gardner.

LIBRARY CLUB



Frazier, Nix, Wilson (Rep.), Upchurch (Soc. Ch.), Fox, Moorman, Tollett (Pres.), Ando, Adams, Keene, Edward (Sponsor), J. Braswell, L. Braswell (Sec.).

The C.S.H.S. Library Club is composed of members of the various classes who are interested in helping with the circulation and care of library materials. The members also show all the motion picture films and care for the projector.

The club offers valuable training for those who may wish to work in a library in college or after college.

CURTAIN CLUB



First row: Umphres, Smith, Tollett, Weatherford, Harris, Tumlinson, Kellogg.

Second row: Rouse, Patrick, Burton, Kirk, Lansford, Upchurch, Cragg.

Third row: Dean, Johnson, Gardner, Fain, Ruff, Leonard.

Fourth row: Wilson, Utley (Sponsor), Power.

BAND



First row: Tumlinson, Rouse, Dean, J. Smith, Leonard, Brady, Wilson.

Second row: Harris, Patterson, Garrison, Oliver, Knaggs, Dawkins, Kirk, White, C. Smith, Castellanos.

Third row: Patrick, Askew, Umphres, Dahl, Ruff, McMains, Mitchell (Director), Sisk, Stahl, Knuckles, Riha, Howard, Altman, Lansford, Kellogg, Logan, Allison, Sharp, Vetter, Pickett, Welborn.



*Director
J. C. Mitchell*

BAND LEADERS

DRUM MAJOR

*Colleen
Kellogg*



Gay Kirk

TWIRLERS



Joy Ray Logan

PEP SQUAD



Cheer Leader: Rosanne Weatherford, Sara Lee Butler, Jacquie Patrick, Betty Pickett.

First row: Warren, Nix, Fernandez, Lopez, Vargas, Langley, Ortiz.

Second row: Gonzales, Jackson, Duran, Willems, Cardenas, Guzman.

Third row: Withington, Wilson, Eardley, Garcia, Ibarra, Berumen.

Fourth row: Saenz, Orr, White, Harrell.



*Sponsor
Mrs. Lydia Coate*

PEP SQUAD LEADERS



DRUM MAJOR

Hazel White



MASCOT

Diane Speer

CHEER LEADERS



Betty Pickett

Jacquie Patrick

Sara Lee Butler

Rosanne Weatherford

ANNUAL STAFF



Farris, Tumlinson, Harris, Burton, Johnson, Kirk, Cragg, Ruff, Gardner, Patrick, Kellogg, Withington.



Editor
Paul Gardner



Asst. Editor
Jo Ann Harris



Bus. Mgr.
Alton Ruff

STUDENT COUNCIL



First row: Rouse, Kellogg (V. Pres.), Kirk (Sec.), Butler, Withington (Treas.), Umphres, Logan.

Second row: Eardley, Fox (Sponsor), Gardner, Hall (Sponsor), Ruff (Pres.), Logan, Smith (Sponsor), White.



PRESIDENT
ALTON RUFF

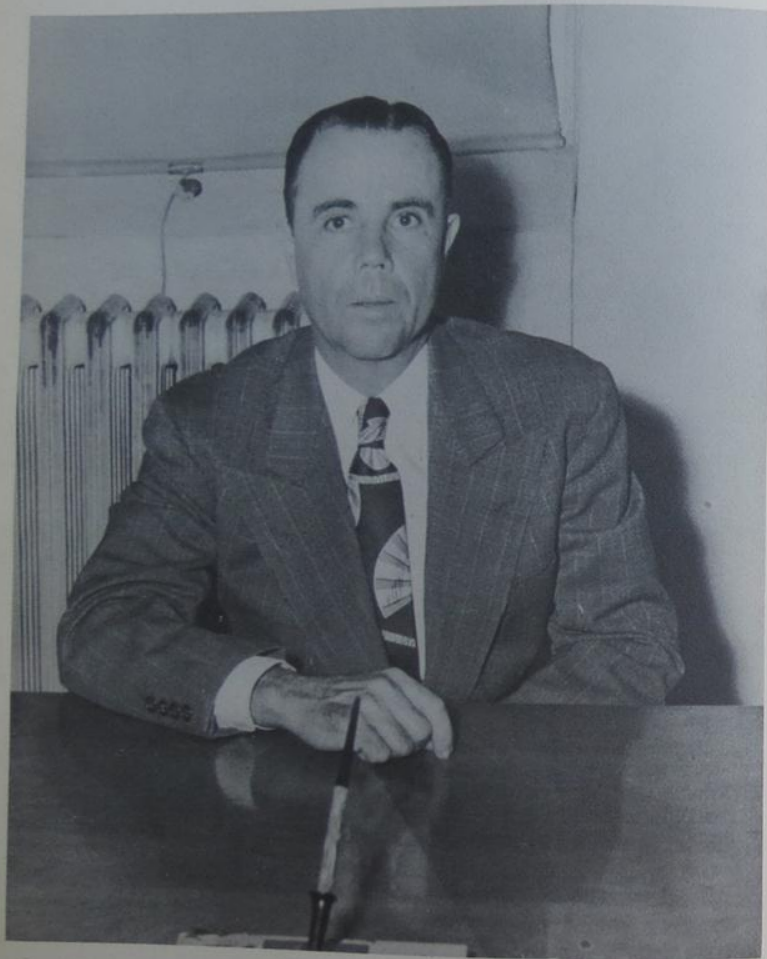
OUR HEARTS WERE
YOUNG AND GAY



ADMINISTRATION



SUPERINTENDENT



BEN R. GUSTINE

PRINCIPAL



PRESLEY E. SMITH



Wes Carpenter



Lydia Coate



Georgia Edwards



Russell Edwards



John Fox



Georgia Hall



Wade House



Geraldine Lane



Grady Lester



J. C. Mitchell



William Parker



Homer Utley Jr.



Audra Walker

CENTRAL WARD FACULTY



First row — Glyn Carpenter, Dora Sheerran, Beatrice Gustine, Ruth Adams, A. R. Sallee (Prin.)
 Second row — Oleta Hughes, Mary Frazier, Pearl Allee, Sue Vandervoort
 Third row — Zelma Gardner, Gertrude Sisk

EAST WARD FACULTY



First row — Maurine Gardner (Prin.), Carnie Frazier, Elizabeth Quinney, Lida Oliver, Marilea Mullins, Cardie Butcher, Elvira Siloa.

Second row — Lura Rouse, Nora Atkins, Margaret King, Ann Hagg, Laura Lee Askeew, Ella Liles, Mrs. B. B. Hutson.

CLASSES





SENIOR FAVORITE
EDDIE LOGAN



SENIOR FAVORITE
MARY OLIVER

SENIOR OFFICERS



DICK BRADY, VICE PRES., COLLEEN KELLOGG, SEC.,
BETTY JO TUMLINSON, TREAS., JOE FARRIS, PRES.

1948 Wildcat Yearbook



Margarita Berumen
Spanish Club 1, 2, 3, 4
Pep Squad 1, 2, 3, 4
H. E. 4
Dance Club 1



Dick Brady
Football 2, 3, 4, Co-
captain 3, All-district 4
F.F.A. 1, 2, 3, Reporter 2,
Treasurer 3, District
Historian 3
Class Favorite 1
Best All-Round 4
Basketball 3, 4
Baseball 3, 4
Class Vice-president 3, 4
Athletic Club 1

Johnnie Brascell

F.F.A. 3
Choral Club 4
Science Club 1
Photography Club 2
Library Club 2
Tennis Club 2
Argus Staff 2

Clyde Bramblett

F.F.A. 1, 2, 3, 4
Photo Club 3, 4
Choral Club 4
Science Club 1
Band 4



Nancy Louise Burton
Choral Club 1, 2, 3,
F.H.A. 1, 2, 3, 4, Par-
liamentarian 4
Annual Staff 1, 4
Tennis 2, 3
Basketball 2, 3, 4, Co-
captain 4
Pep Squad 1, 4, Flag
Bearer 4
Band 2, 3
Dramatic Club 1, 2,
3, 4
Plays 1, 4
Argus 1
Kittens 1
Volley Ball 4



Mary Cardenas
El Quien Sabe Staff 1,
2, 3, Editor 3
Spanish Club 1, 2,
Treasurer 2
Volley Ball 3, 4
Basketball 2, 3, 4, Co-
captain 4, All-tourna-
ment team 3, 4
Pep Squad 4
Choral Club 4

Jimmie Dean

Transferred from Camp
Wood 3
Choral Club 3, 4
Curtain Club 3, 4
Band 4

Joy Cragg

Choral Club 1, 2, 3, 4,
Secretary 4
F.H.A. 1, 2, 3, 4
Dramatic Club 2, 3, 4
Pep Squad 1, 3, 4
Business Mgr. 4
Press Club 1
Argus 3, Typist 3
Annual Staff 4, Typist 4
Tennis 2
Volley Ball 3, 4





David Fain

Choral Club 1, 2, 3, 4
Athletic Club 1, 2, 3
Science Club 1
Football 3, 4
Basketball 3, 4
Baseball 3, 4
Curtain Club 4



Joe Farris

Football 2, 3, 4,
Captain 4, All-
District 4
Basketball 1, 2, 3, 4,
All-district 4
Baseball 3
Track 4
F.F.A. 1, 2, 3, 4
Class Favorite 3
Class Pres. 1, 2, 4
Annual Staff 3, 4
Athletic Club 1, 2

Nan Harrell

Choral Club 1, 3, 4
F.H.A. 1, 2, 4, Presi-
dent 2
Senior Trio 4
Duchess to Pearsall 4
Pep Squad 1, 3, 4
Library Club Secretary
1
Class Treasurer 1
Class Vice President 2
Annual Staff 2

Margaret Hansen

F.H.A. 1, 2, 3, 4



Pat Gardner

Choral Club 1, 3, 4
Athletic Club 1
Student Council 3
Football 3, 4
Basketball 3, 4
Baseball 3, 4
Vice President of
Class 2

Irene Galan

Spanish Club 1, 2, 3
Pep Squad 1



Rosabel Harris

Choral Club 1, 2, 3, 4
F.H.A. 1, 2, 3, 4
Pep Squad 1, 2, 3, 4
Band 1, 3
Argus Staff 1

Ross Johnson

F.F.A. 1, 2, 3, 4, Fifth
Vice Pres. of Dist. 4
Annual Staff 1, 2, 3, 4,
Snaps Editor 3, 4
Curtain Club 2, 3, 4,
Play 3
Baseball 3, 4
Athletic Club 1
Photography Club 3, 4,
Secretary-treasurer
3, 4
El Quien Sabe 3
Choral Club 3, 4



Paul Gardner

Annual Staff 1, 2, 3, 4
Editor 4
Argus Staff 2, 3
Choral Club 1, 2, 3, 4,
Boys Quartet 3, 4
Curtain Club 2, 3, 4,
Pres. 3
Student Council 2, 3, 4
V. Pres. 3
Athletic Club 1, 2
Tennis 2, 3, 4
El Quien Sabe 3



Joe Garza

F.F.A. 1, 2, 3, 4
Spanish Club 1, 2, 3
El Quien Sabe Sports
Editor 2
Football 3
Baseball 3

Colleen Kellogg

Choral Club 1, 2, 3
Basketball 2, 3, 4
F.H.A. 1, 2, 3, 4
Band 1, 2, 3, 4,
Majorette, drum
major 2, 3, 4
Argus 1, 3
Student Council 2, 3, 4
Sophomore favorite 3
Junior favorite 3
Senior Best All-Round
4
Queen of Homecoming
4
F.F.A. Sweetheart 4
Class Secretary 3, 4

Bill Kammer

F.F.A. 3
Basketball 4
Choral Club 3, 4
Track 4



Eulogia Guzman

Spanish Club 1, 2, 3
Pep Squad 1, 2, 3, 4
Basketball 4

Jesus Gomez

Football 1, 2
F.F.A. 1
Athletic Club 1, 2
Veteran



Charles Leonard

Choral Club 4
Curtain Club 3, 4
Photography 3, 4
Science 1, 2
Band 4



Eddie Logan

Athletic Club 1, 2
Football 3, 4
Basketball 2, 3, 4
Baseball 3, 4
Track
F.F.A. 2, 3, 4, Favorite
2, 4
S. Council 4
Argus 2
Annual 2
Choral 1, 2, 3
C. Reporter 2
Tennis 1, 2



Betty Pickett
Choral Club 2, 3, 4
Pep Squad 2, 3, 4
Cheer Leader 4
Secretary of Class 3
F.H.A. 2, 3, 4
Library Club 3
Volley Ball 2



Mary Oliver
Choral Club 3, 4
F.H.A. 1, 2, 3
Trio 3, 4
Duchess to Uvalde 4
Band 1, 2, 3, 4
Spanish Club 1, 2
Class Favorite 4
Annual Staff 3
Paper Staff 2
Class Treasurer 1

Edmundo Patlan
Spanish Club 1, 2, 3,
Treasurer 3
El Quien Sabe Staff
2, 3, Asst Editor 3
Football 3
Baseball 3, 4

Adrain Sallee
Football 3, 4
F.F.A. 2, 3, 4,
Athletic 1
Track 4

Lydia Saenz
Pep Squad 1, 2, 3, 4,
Spanish Club 1, 2, Vice
president 3
Dance Club 2
Assistant Editor of El
Quien Sabe 2,
Reporter 3
F.H.A. 2, 3, 4



Betty Tollett
Volleyball 2, 3, 4, Cap-
tain 3
Reading Club 1
Band 1, 2, 3
Pep Squad 4



Betty Jo Tumlinson
Band 1, 2, 3, 4,
Pep Squad 1
F.H.A. 1, 2, 3, 4,
Reporter 3, President
4
Choral Club 1, 2, 3, 4,
Secretary 1
Press Club 1
Annual Staff 4
Curtain Club 3, 4,
Property Mgr. 3, 4
Class Treasurer 4
Home Coming Duchess 4
Basketball 2, 3, 4
Kittens 1
Tennis Club 2



Jacqueline Patrick
Choral Club 2, 3
F.H.A. 1, 2, 3, 4, Par-
liamentarian 3
Annual Staff 4
Tennis 1, 2, 3
Basketball 2, 3, 4,
Captain 2
Pep Squad 1, 4, Flag
Bearer 1, Cheer
Leader 4
Band 2, 4
Dramatic Club 3, 4
Plays 1, 3, 4
Argus 2, 3
Kittens 1



Mattie Louise Pond
Volley Ball 2, 3
Choral Club 2, 3, 4
F.H.A. 1, 2, 3, 4
Library Club 3
Pep Squad 1, 2



Clarence Powell
Choral Club 3, 4
Curtain Club 3, 4



Ralph Wilson
Football 2, 3, 4
Curtain Club 3, 4
Class President 3
Basketball 2, 3, 4
F.F.A. 1, 2, 3
Track 4

Alberto Veloz

Alberto Veloz
Football 4
F.F.A. 1, 2, 3,
Baseball 4
Spanish Club 1



Alton Ruff
Band 1, 2, 3, 4
Choral Club 1, 2, 3, 4
Boys Quartet 3, 4,
Pres. 3, 4
Curtain Club 1, 2, 3, 4
Argus Staff 2
Tennis 2, 4
Annual Staff 3, 4, Busi-
ness Mgr. 4
Student Council 4,
Pres. 4



Pat Power
Football 2, 3, 4, 2nd
All-District 4
Baseball 3, 4
Track 4
Dramatic Club 2, 3, 4
Plays 2, Stage Director
4
F.F.A. 2, 3, 4
Athletic Club 1, 2
Choral Club 1, 2, 3



Jeanne Withington
F.H.A. 1, 2, 3, 4
F.F.A. Sweetheart 4
Annual Staff 4
Argus Staff 4
Choral 3, 4, Vice-Presi-
dent 4
Student Council 4
Treasurer 4
Homecoming Duchess 4
Tennis 3
Volley Ball 3
Pep Squad 2, 4
Trio 4
Band 3, Twirler 3
Social Chairman 3



Toni Earle
Transferred from Utah
4
Choral Club 4





JUNIOR FAVORITE
LOT TURLINSON



JUNIOR FAVORITE
BETTY JUNE ROUSE

JUNIOR OFFICERS



BILL KNAGGS, PRES., HAZEL WHITE, TREAS.,
BETTY JUNE ROUSE, SEC.

Joe Correa
Velia Castellanos
Malcolm Asken



Billy Joe Frazier
Alicia Galan
Gloria Gonzales

Betty Jackson
Jo Ann Harris
James Harding



Gay Kirk
Bill Knaggs
Loretta Langley



Joy Ray Logan
Estella Lopez
Patricia Mangum

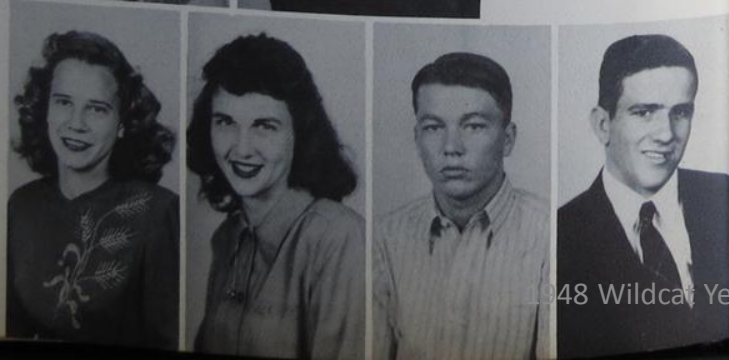
June Rouse
Anna Claire Moorman
Bob Marshall



Casimero Salinas
Laura Sharp
Nell Tollett



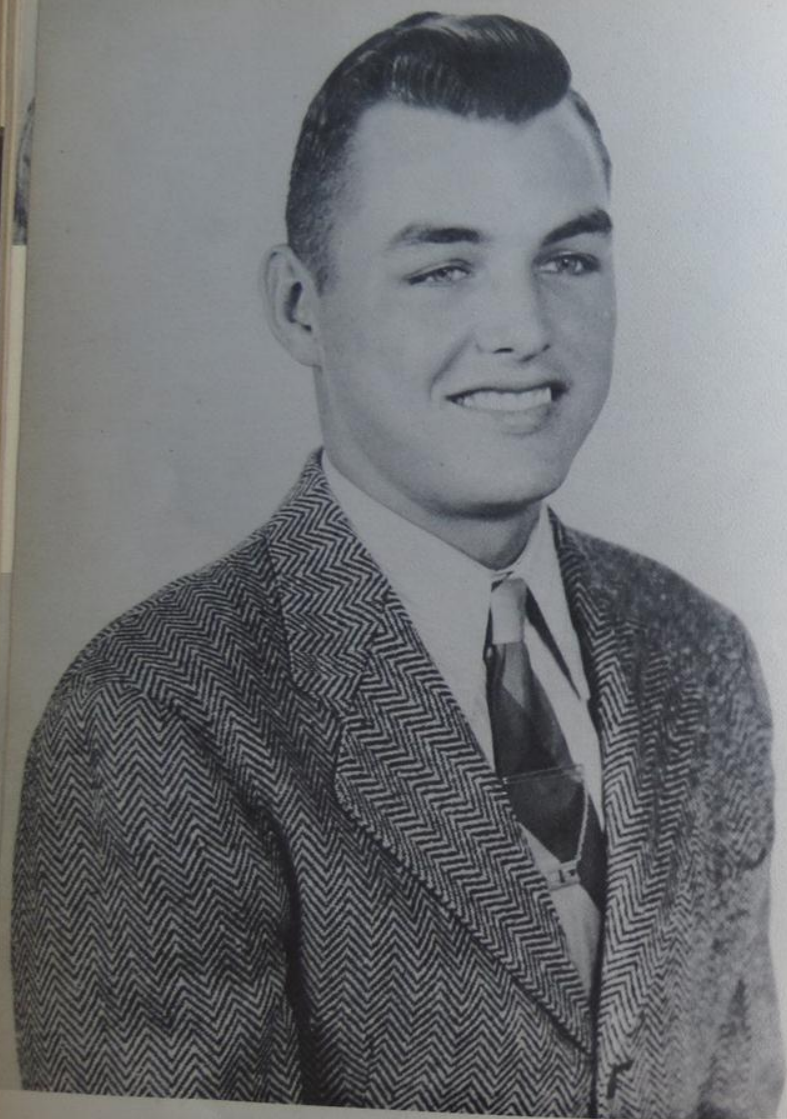
Hazel White
Roseanne Weatherford
Lloyd Vician
Lot Tumlinson



SOPHOMORE OFFICERS



CARMEN SMITH, TREAS., J. L. MOULDER, VICE PRES.,
JOHNNY SISK, PRES., LELLAH NIX, SEC.



SOPHOMORE FAVORITE
LONNIE COLEMAN



SOPHOMORE FAVORITE
SARA LEE BUTLER



Edgar Altman



Sara Lee Butler



David Leonard



Lellah Nix



Alice Rose Orr

Marion Allen



La Jeanne Braxwell



Lonnie Coleman



Marie Lansford



J. L. Moulder



Janey Duran



Dorothy Eardley



Bentura Esquivel



John Sisk



Carmen Smith



Earl Smith

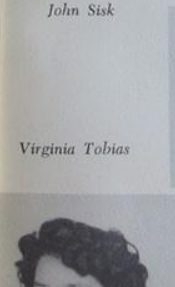
Elizabeth Garrison



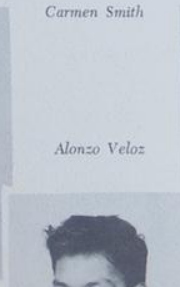
Connie Ibarra



Beauford Lackey



Virginia Tobias



Alonzo Veloz



Nina Mae Wilson



Chris Hansen



Arturo Juarez



Pedro Vargas



Charles Ray White





FRESHMAN FAVORITE
BUCK LANSFORD



FRESHMAN FAVORITE
PEGGY WHITE

FRESHMEN OFFICERS



JOHN JACKSON, PRES., DONALD TUMLINSON, VICE PRES.,
JOE ANDO, SEC., FLORENCE WILLEMS, TREAS.

joe ando
fred bramasco
bee coate



elifonzo esquivel
edwin lott frazier
james frazier

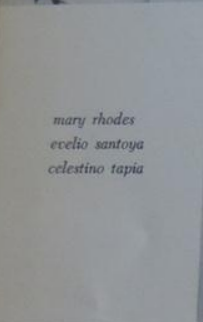
florencia garcia
gilberto garza
raul guerrero



louise hansen
patsy hunt
mary johnson



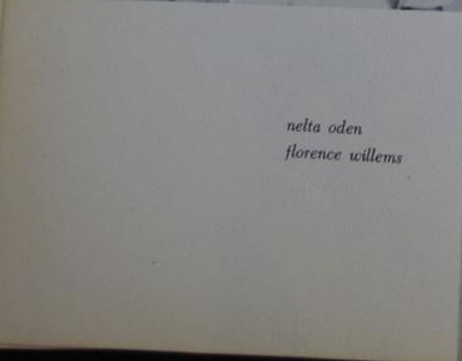
buck lansford
berta ortiz
marie ramsey



mary rhodes
ecelio santoya
celestino tapia



donald tumlinson
armilda warren
peggy white



nelta oden
florencia willems



BOOSTERS

William's Hardware

Pan-American Supply Co.

White's I.G.A.

Rightway Cleaners

Sky Harbor Cafe

Ben Franklin Store

Style Shop

Cottage Inn Hotel

Blue Bonnet Cafe

Dr. J. R. White

The Javelin

Marney Service Station

Union State Bank

Williams and Vandervoort Furniture Co.

Sunshine Cafe

Piggly Wiggly

Grant Lumber Co.

Joe's Service Station

Smith and Stahl Inc.

Power's Store

Red and White

Carrizo Car and Home Supply

Polly-Winn Shop

Sinclair Service Station

Kimble Real Estate & Insurance Co.

A. A. Kimble

Manly Mabry

Reddick Fruit and Vegetable Co.

Magnolia Petroleum Co.

Vandervoort Abstract Co.

Bob Umphres

Kirk's Grocery

Mannering's Pharmacy

Central Pharmacy

Mr. and Mrs. Terrell Kellogg

BOOSTERS

Jack's Shoe Shop
Roegel's Electric Co.
Earl McClendon
Carrizo Sheet and Metal Works
Anderson and Wydell
Tommy Power Jr.
Dimmit Supply Co.
Willem's Studio
Carpenter's Insurance Agency
Cactus Beauty Shop
Pullen's
Texas Gas Distributing Co.
Clem's Cleaners
Skeeter's Welding Works
Patton Grocery
Hy-Way Courts
J. C. Petry Jr.

A. J. Knaggs

Mrs. F. F. Kellogg
Carrizo Courts
Dimmit Feed Store
Citizen State Bank
City Drug
Jeff's Cleaners
Ayer's Electric Co.
Texas Theater
Williams, the Jeweler
Builderback Service Station
Gulf Service Station & Grocery
Dr. Pepper Bottling Co.
Burn's Truck Lines
Ray Patlan Humble Service Station
Wilson Real Estate & Insurance
Al Vivian Chevrolet Co.
Central Power and Light Co.

