



1939

Wildcat Yearbook

Carrizo Springs CISD



WILDCAT

1939

1939 Wildcat Yearbook



Mrs Elvira Garza Silva
Carrizo Springs Texas
May 9, 1939.

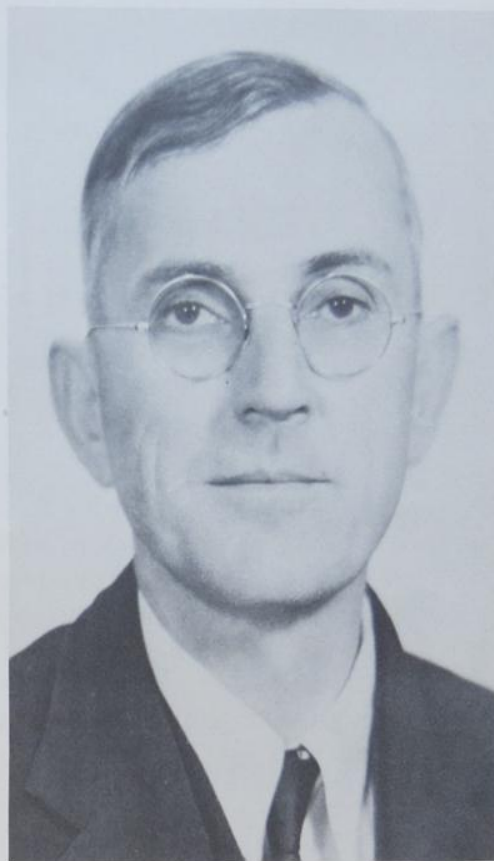
The Wildcat



1939

Foreword

ON LOOKING BACK, WE SEEM ONLY TO HAVE SKIMMED THIS YEAR. ITS FEW REMINDERS THAT WE HEREIN RETAIN WILL BECOME MORE AND MORE PRECIOUS AS YOU GROW OLDER. KEEP THEN THIS PICTORIAL REVIEW OF THIS SCHOOL YEAR, AND IN SOME TOMORROW YOU WILL FIND ITS VALUE PRICELESS.



M.P. WILLIS DEDICATION

BECAUSE OF HIS WILLING COOPERATION WITH US, HIS ENCOURAGEMENT TO US, AND HIS INTEREST IN US, WE, THE STAFF, DEDICATE THIS FOURTH VOLUME OF *THE WILDCAT* TO OUR SUPERINTENDENT,
M. P. WILLIS.



BETTY JO EHLERS
Editor-in-chief

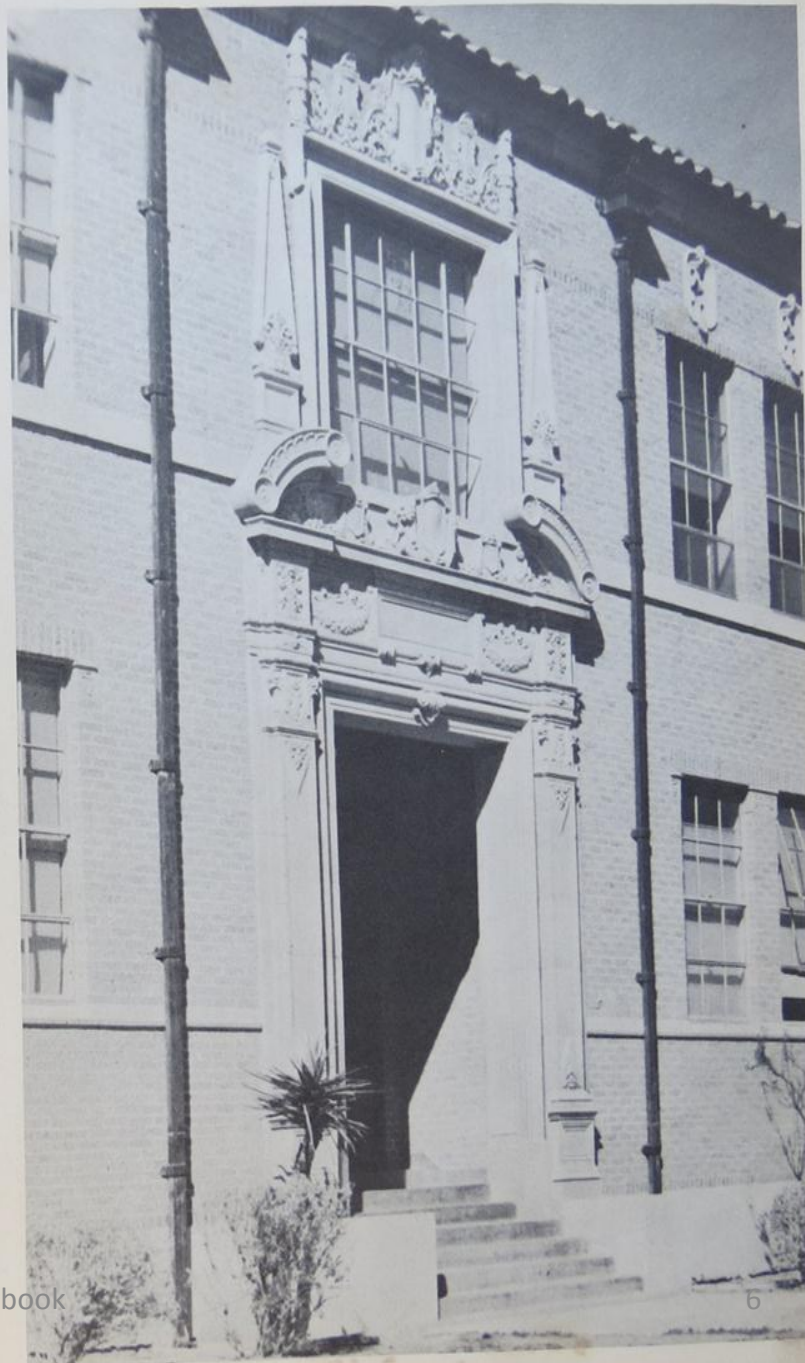
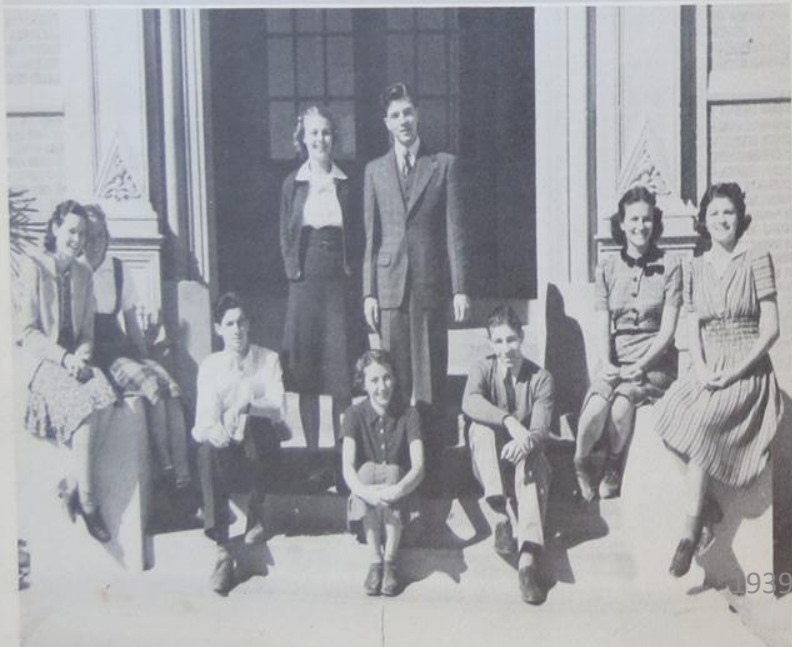
WILLIAM LANDRUM
Business Manager

WILDCAT STAFF



HOMER UTLEY
Sponsor

BETTY JO EHLERS	Editor-in-chief
WILLIAM LANDRUM	Business Manager
JIM MULLINS	Art Editor
ANDREW JOHNSON	Assistant Editor
JIM MULLINS	Ass't. Bus. Mgr.
TULA THOMAS	Ass't. Art Editor
HARRIET HUDSON	Class Editor
DIXIE VAN NIEUKENHUYSE	Snapshot Editor
MARTHA RANDLE	Humor Editor
HOMER UTLEY	Sponsor

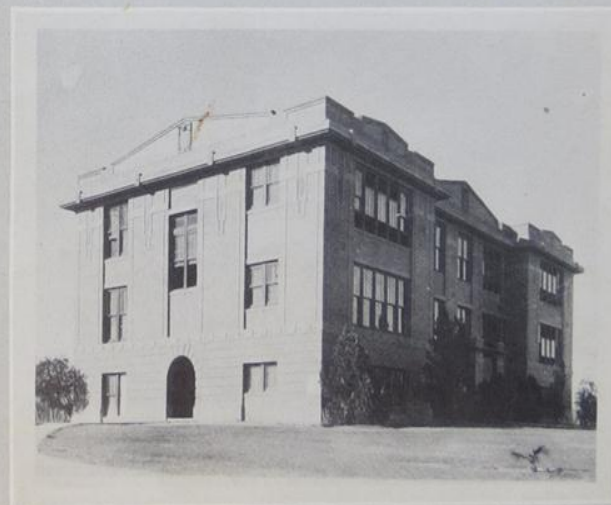




**HIGH SCHOOL
ANNEX**



**GYMNASIUM
CENTRAL WARD**





GYM COURT AUDITORIUM



M. P. WILLIS
Superintendent of Schools

SCHOOL BOARD



BRUCE LEONARD
President



ALBERT SMITH



JOHN STAHL
Secretary

W. K. RUSSELL

BEN COOK

E. RHODES

JESSE LONG



FACULTY



DUANE ARNEY Phy. Ed. Math	BETH ADAMS Social Studies	REBECCA BRANCH Spanish	FELIX BURTON Agriculture	SKIDA MAE BUTLER Art, Penmanship
------------------------------	------------------------------	---------------------------	-----------------------------	-------------------------------------



WALLACE BYER Band	JEANETTE CARRIS Fourth Grade	IRENE CHILDRESS East Ward	GEORGIA DORSEY Social Studies	BOHELLE FAULK Second Grade
----------------------	---------------------------------	------------------------------	----------------------------------	-------------------------------



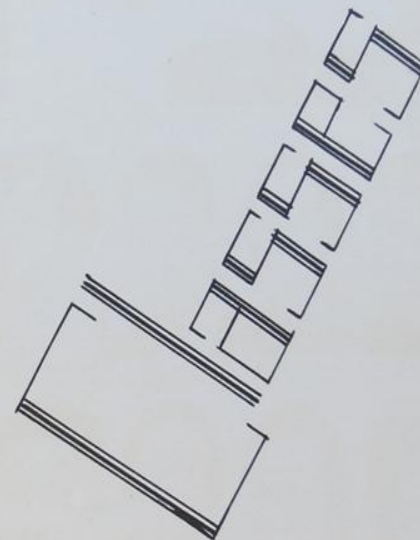
MARY FRANKLIN Second Grade	STANLEY MAE GOGGE Prin. of E. Ward	MARY EICKERSON East Ward	ANN HOUSTON Coach, Science	BETH JEFFREY Fourth Grade	M.W. FRIDGEN Commercial
-------------------------------	---------------------------------------	-----------------------------	-------------------------------	------------------------------	----------------------------



VERNA FRIDGEN Math, English	MRS. QUINCY East Ward	E. RHODES Bible	MRS. S. SYLVA East Ward	EMLEY SIMMONS Bible	FRANCES SIMS Phy. Ed.
--------------------------------	--------------------------	--------------------	----------------------------	------------------------	--------------------------



BEILE TAYLOR First Grade	ANNIE L. TUTTLE Third Grade	C.F. URSCHIC Prin. C. Ward	BURKE UREY Speech, English	VERNA WALKER English	SILMA WIDOMAN Home Room
-----------------------------	--------------------------------	-------------------------------	-------------------------------	-------------------------	----------------------------





HARRIET HUDSON
President



JACK JEFFREY
Vice-President



Betty-Jo Ehlers
Secretary

Miss Walker
Sponsor



SENIORS



BASIL ARNOLD
Band 1,2,3,4; F.F.A. 1,2,3; Glee Club 3;
Member of Texas F.F.A. Band 2,3.



WATSON BARLOW
Declamation 1; H-T 3,4; Track 1.



BONNIE JEAN BEAL
F.H.A. 1,2,3,4; Glee Club 4;
Pep Squad 2,3.



IMA JEAN BOSTIC
F.H.A. 2,3; Glee Club 3,4; Spelling 2;
Tennis; Typing 3.



TRAVIS BOX
F.F.A. 1,2,3,4; Fire Dept. 2;
Football.



KENNETH BRADSHAW
F.F.A. 2,3,4.



BETTY JANE CALLAHAN
Annual Staff 4; Basketball 1,2,4;
D.A.R. Representative; Dramatic
Club 2,4(Publicity Mgr.); F.H.A. 1,2;
H-T 2,4; Kitten Association; Kit
Kat Staff; Pep Squad Leader 2,4;
Volleyball 2,4; Typing 4; "Who's
Who"; Senior Play; Best All-Round
Girl 4; One-Act Play.



H. O. CASE
F.F.A. 1,2,3; Fire Dept. 1; Football;
Track 2.



MARY ELIZABETH COOK
Dramatic Club 3,4; F.H.A. 1,2,3,4;
Glee Club 3,4; H-T 3,4; Pep Squad 4;
Spelling 2; Spanish Club 4; Property
Mgr. of Senior Play.

BETTY-DE SHIRES
Annual Staff 3,4; Basketball 4; Dramatic Club 4; Decamation 4; F.F.A. 1,2,3,4 (Pres.); Fire Dept. 2; Glee Club 3; Hi-Y 3,4 (Vice-Pres.); Kitten Association 4; Pep Squad 1,2,3,4 (Leader 3,4); Senior Class Secretary; Volleyball; "Who's Who"; Senior Play; Joven.

PERKIN PARSONS
Band 1,2,3,4; Fire Dept. 2; Football 4; Glee Club 3; Senior Play.

MARVIN FRANCES
Basketball; Debate 3,4; Dramatic Club 2,3,4; F.F.A. 1,2,3,4; Fire Dept. 2; Glee Club 3,4; Hi-Y 3,4; Pep Squad 1,2,3,4; Spanish Club 4; Senior Play.

CONRAD CARRINGS

GLENN GRAY
Basketball 2,3,4; Band 1,2,3,4; "C" Association 3,4; Debate 3; Decamation 2,3,4; Dramatic Club 4; F.F.A. 1,2,3,4 (Pres.); Football 3,4; Track 3,4; Senior Play.

GENE KANE
Band 1,2,3,4; Basketball 2,3,4; F.F.A. 1,2; Fire Dept. 2; Football 2,3,4; Track 2,3,4.

VICTOR HART
Band 2,3,4; Baseball 2; Basketball 4; "C" Association 4; Fire Dept. 2; Football 4; Glee Club 3; Hi-Y 3,4; Track 3,4.

GERALDINE BURTON
Dramatic Club 4; F.F.A. 4; Hi-Y 3,4; Pep Squad 3,4; Spanish Club 4.

MAURICE HURD
Annual Staff 4; Glee Club 3,4; Hi-Y 3,4 (Secretary); Pep Squad 3,4; President of Senior Class; Volleyball; Business Mgr. of Senior Play.

ADRIE JACKSON
F.F.A. 4 (Vice-Pres.); Glee Club 4; Pep Squad 4; Volleyball.



JACK JEFFREY (Class Vice-President)
Basketball 1,2,3,4; "C" Association 3,4 (Pres.); Dramatic Club 4; F.F.A. 1,2; Fire Dept. 2; Football 1,2,3,4 (Capt.); Hi-Y 3,4 (Pres.); Track 2,3,4; Tennis 3,4; Volleyball 1,2; "Who's Who"; Senior Play; Best all-Round Boy 4.

LEROY JONES
F.F.A. 2,3,4.

WILLIAM LANDRUM JR.
Basketball 1,2,3,4 (Capt.); Annual Staff 3,4; Baseball 2; "C" Association 3,4 (Vice Pres.); Dramatic Club 3,4 (Pres.); F.F.A. 1,2; Fire Dept. 2; Football 2,3,4; Glee Club 3; Hi-Y 3,4; Track 2,3; Volleyball 2; "Who's Who"; Senior Play; King 4; One-Act Play 4.

HAROLD LANDFORD
F.F.A. 3,4; Football 4.

RUTH LONG
Dramatic Club 4; Glee Club 3,4; Decamation 2; Pep Squad 2; Spanish Club 4; Spelling 4; Typing 4; Senior Play.

RAYMOND LOVE
F.F.A. 1,2,3; Fire Dept. 2.

HOUSTON MARNEY
Basketball 4; Band 1,2,3,4; "C" Association 4; Debate 3,4; F.F.A. 1,2; Football 3 (Mgr.); Glee Club 3; Hi-Y 4; Tennis 1,4; Track 3; Stage Mgr. of Senior Play.

HAROLD MCFORD
Dramatic Club; Senior Play; Drill Major of Band.

WINNIE MOORE
F.F.A. 1,2,3; Glee Club 3; Hi-Y 3,4; Volleyball.

EVELYN OWEN
Decamation 2; F.F.A. 2,3; Glee Club 3; Hi-Y 4; Kitten Association 3,4; Tennis 2,3,4.

KYLE OYER
Basketball 3,4 (Capt.); Pep Squad 4;
Volleyball 4; Kit Kat Staff, Kitten
Association.

MARIEA HANDE
Annual Staff 4; Dramatic Club 3,4 (Vice-
Pres.); Decamation 4; F.H.A. 1,2; Glee
Club 3; Hi-Y 4; Pep Squad 2,3,4 (Mgr.)
Senior Class Reporter; Student Song Lead-
er 4; Student Director of Senior Play;
One-Act Play 3,4.

CROCKETT KROGGE
Track 4.

DOUGLASS KROGGE
F. F. A. Sweetheart 4; Glee Club 4; Pep
Squad 4; Student Song Leader 4; Volley-
ball 4.

RUBY BRANF
Basketball 3,4; Dramatic Club 3,4; F.H.A.
1,2,3,4; Glee Club 3,4; Hi-Y 4; Kit-Kat Staff
4; Kitten Association 3,4; Pep Squad 1,2,3,4;
Volleyball 2,3,4.

JAMES SHIVELY
F. F. A. 1,3,4; Fire Dept. 2; Football
Track 2,3.

CORA BULLIE TEMPLER
Basketball; F.H.A. 1,2,3,4; Essay
Writing 1,2,3,4; Glee Club 3,4; Hi-Y 3; Pep
Squad 1,2,3,4; Spelling 4; Volleyball.

ROSALIE TOUCHNET
F.H.A. 2; Decamation 4; Spanish Club 4;
Volleyball.

DORIS TURNER
F.H.A. 1,2,3; Pep Squad 2,3; Volleyball.

BETTY FRANK
Band 4; F.H.A. 4; Pep Squad 4.

GEORGE WILLEMS



DIXIE VAN NIEUWENHUYSE
President



MARGIE WILSON
Vice-President



KATHLEEN BELL
Secretary

MISS DORSEY
Sponsor



JUNIORS



ALMA FAYT AYERS

LAXTON NEW



KATHLEEN BELL
WELDON BLACKARD



STEVE SINTON
DELBERT SORRELL



JAMES MORAN
HAROLD CARTWRIGHT



FREDELL SPELMAN
DIXIE VAN NIEUWENHUYSEN



HELEN CAYMOART
MARIE HARDLEY



BETTY VERBOR
V. A. WARREN



MARJORIE EHLERS
ANDREW JOHNSON



DANEY WEBB
CHERYL WHITE



BETTY SUE MATHIS
JIM MULLINS



MAXINE WILLIAMS
MARGIE WILSON

SOPHES



MARY JO LINDLEY
President



LORRAINE MITCHELL
Vice President



FRANCES MC RORY
Secretary-Treasurer



MR. BURTON
Sponsor



MARILYN ABBOTT
MARY LILLIAN AYERS
IRENE BELL



JOYCE HURTON
BILLY BUTLER
JOSEPHINE COOK
VIRGINIA FLOWERS



BILL FRAZIER
LEONARD GARY
ALLEN HELLESTEN
EVELYN JONES



ELSIE LANGFORD
MARIA LOPEZ
MARY MC CLENDON
BETTY MEADOWS



GWENDOLYN NEW
CATHERINE O'DWYER
WILLIAM ORR
ADA REA RANKIN



ROBERT SCHMITZ
FRANKETTE SHARP
WILLIAM SHARP
AARON SHIVELY



PEGGY SPIELMAN
MARVIN STONE
JOYCE STRIPLING
MAXINE STUESSEY



JAMES TARVER
DOROTHY TEMPLER
EULA THOMAS
BOBBY TOODIGNY



ANNETTE TUMLINSON
VIRGINIA TURNER
ESPERANZA VILLANUEVA
MARY ELLLEN WHITE



SAMMY WHITE
JANE WILLIAMS
GORDON WILLIAMS
VERNA JO WILLIAMS



richard tunlinson
president



G. V. SPEER
vice president

FISH



MRS. BRANCH
SPENSER



VERNER WILLIAMS
secretary

W. F. ALLINDER
SPIRIT BOX
BARBARA BURTON



FAY BUTLER
JACK BUTLER
MALCOLM CARTWRIGHT
MARGARET CARTWRIGHT



J. W. CHANDLER
MURIEL DAVIS
MARJORIE HARDLEY
BOB FLEMING



BOB FLEMING
JACK GRAHAM
LEE ANN HALL
BESSIE HANNA



billie frances holsten
warren holmgren
julia horton
verner howard



dorothy ively
elmo kussner
ross kilpatrick
betty kusblauh



marilee marney
calvin mathis
charles mobley
lillian owen



florence patterson
grafford rhodes
alfreds sanchez
john schmitt



o.v. speer
william stobaugh
betty wall strippling
richard tumlinson



mattie laura umphres
rose williams
maurice williams
verner williams



GOITERS





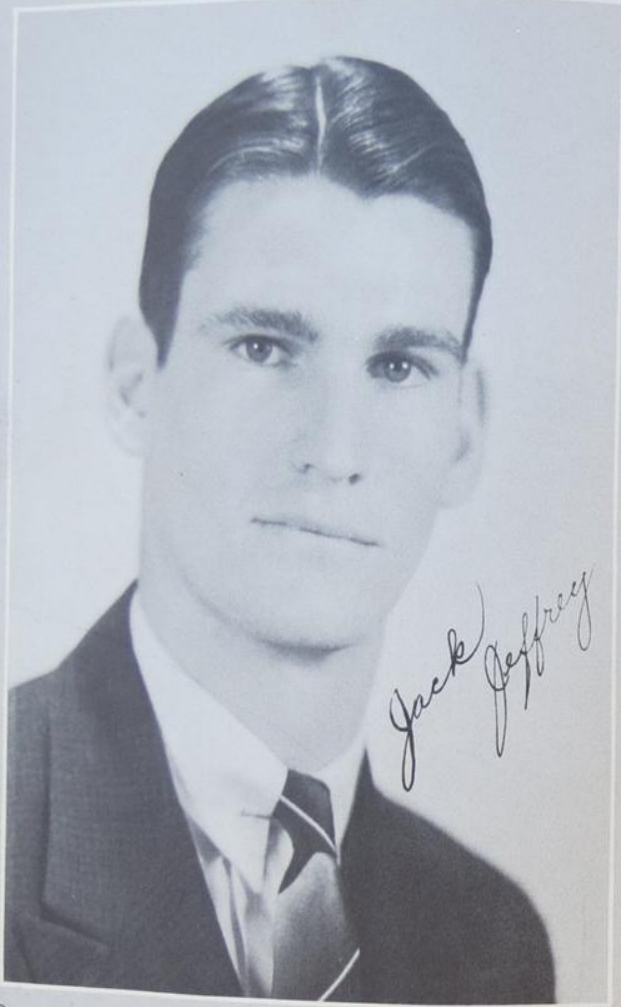
Betty J. Ehlers

QUEEN



William Landrum

KING



Jack Jeffries

Best All Around



Betty Callahan

Best All Around



1. WAITING FOR THE BELL?
2. MESKINS.
3. AS USUAL.
4. OUT--UNDER THE TREES.
5. GUESS WHO?

6. JIM-BO.
7. GOOD SCOUTS.
8. VERY FUNNY!
9. MERRILY SHE'S MARILEA.



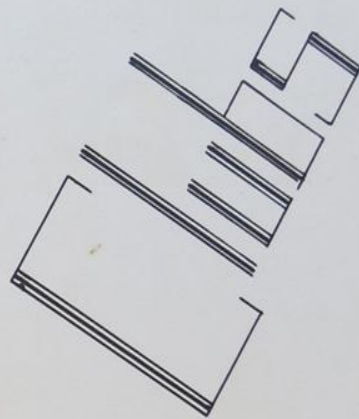
1. GOING SOME PLACE?
2. CLEVINGER.
3. HI GIRLS.
4. FUTURE TENNIS CHAMPS.

5. TIRED?
6. HI-Y?
7. HATS, WHERE'RE THE GIRLS?
8. JEEPERS CREEPERS.
9. MUMPS?



1. COACH EHLERT.
2. SUCH IMMODESTY!
3. H. O. (OH HERO)
4. BYERS & CO.
5. STOCK POSE NO. 5

6. QUE DICE?
7. SMILE, BETTY!
8. WINNERS.
9. WHERE'S HAROLD?
10. THAT'LL COST YA!



LEADERS



BETTY JO



MABEL



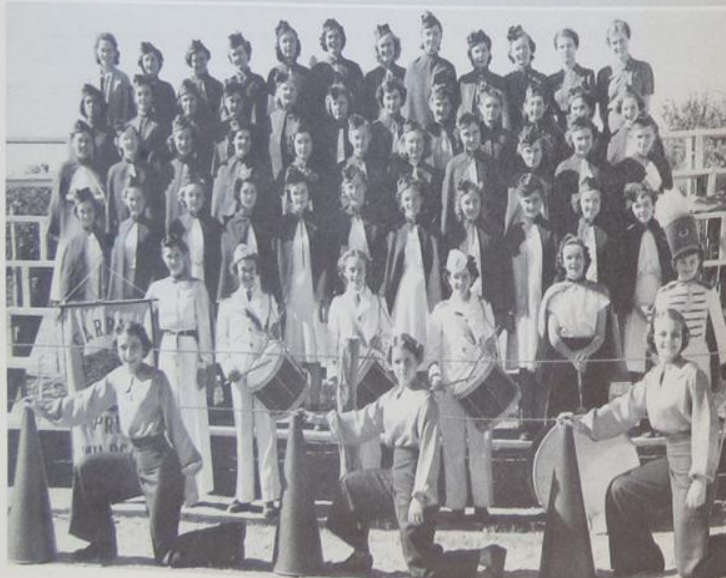
BETTY

LEADERS

BETTY JO EHLERS
BETTY CALLAHAN
MARIE EARDLEY

SPONSORS

GEORGIA DORSEY
FRANCES SIMS



WALLACE BYERS
DIRECTOR

HAROLD MOGFORD...DRUM MAJOR



B
A
N
D

MARJORIE EHLERS
DRUM MAJOR



FFA



FUTURE FARMERS

GLENN GRAY--PRESIDENT
 TRAVIS BOX--VICE PRESIDENT
 E. G. CASE--SECRETARY-TREASURER
 DOROTHY RHODES--SHRETHKARY
 FELIX BURTON--SPONSOR

FHT



FUTURE HOMEMAKERS

BETTY JO BEARS--PRESIDENT
 ADELE JACOB--VICE PRESIDENT
 MARY JO LINDLEY--SECRETARY
 MARILYN MARNEY--TREASURER
 SELMA WINKERMAN--SPONSOR

ACTORS



DRAMATIC CLUB

WILLIAM LAYTON--PRESIDENT
 MARTHA HADLEY--VICE PRESIDENT
 MARGARET ANDERSON--SECRETARY
 BETTY CALLAHAN--PUBLICITY MANAGER
 SPONSOR--ROMAN UTLEY

SINGERS



GLEE CLUB

WALLACE BYERS--DIRECTOR
 MRS. D. ARNET--ASSISTANT DIRECTOR
 RUTH LONG--ACCOMPANIST



1. DALE.
2. WHATCHA DOING?
3. PAPPY'S HUNGRY.
4. TARZAN'S MATE.
5. RUBY AND HER LAUGH.

6. SCHOOLMATES.
7. CHAMPION EVELYN.
8. HUDDLE GIRLS.
9. ALWAYS TOGETHER.
10. SIMS FANS.



Athletics





JACK JEFFREY, BACK



ABE HOUSTON, COACH



WILLIAM LANDRUM, END



GENE HARR, BACK



GLENN GRAY, GUARD



HOUSTON MARNEY, TACKLE



PERRIN FARRIS, TACKLE



VICTOR HART, END



JIM MULLINS, BACK



STEVE RECTOR, BACK



HAROLD CARTWRIGHT, CENTER



ROYCE MEADOWS, TACKLE



DAMON WEBB, CENTER



L. A. WARREN, GUARD



FOOTBALL

SEASON'S RESULTS

WILDCATS	14	-----	DEVINE	0
WILDCATS	0	-----	PEARSALL	0
WILDCATS	26	-----	SABINAL	0
WILDCATS	26	-----	SAN FELIPE	0
WILDCATS	26	-----	BRACKETVILLE	0
WILDCATS	14	-----	DEL RIO	18
WILDCATS	40	-----	EAGLE PASS	6
WILDCATS	28	-----	UVALDE	13
WILDCATS	12	-----	CRYSTAL CITY	0
WILDCATS	6	-----	PEARSALL	34

RUNNERS UP FOR DISTRICT CHAMPIONSHIP



JACK JEFFREY, CAPTAIN

KITTENS ASS'n

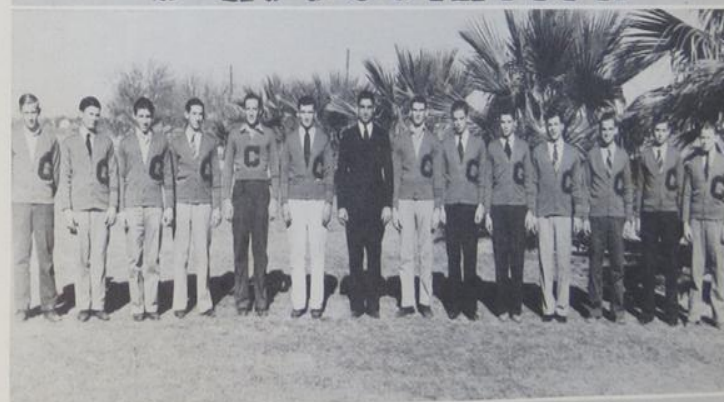
OFFICERS

Kathleen Bell....
President
Deris Anderson...
Secretary
Frances Sims.....
Sponsor



Row 1: Hardley, Anderson, Bell, Callahan, E. Owen, Cathcart
Row 2: Williams, J. Sharp, R. Sharp, Ehlers, H. Owens, Sims

"C" ASSOCIATION



Webb, Gray, Mullins, Farris, Warren, Harr, Houston, Jeffrey, Marney, Cartwright, Landrum,
Meadows, Hart, Reister

OFFICERS

Jack Jeffrey.....President
William Landrum.....Vice-President
Jim Mullins.....Secretary
Abe Houston.....Sponsor



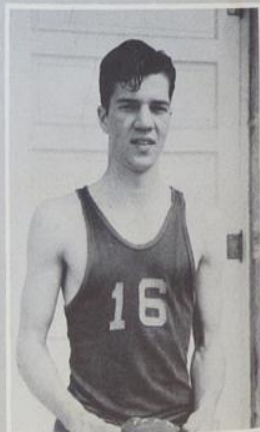
WILDCATS



ROW 1. MULLINS, GRAY, LANDRUM, JEFFREY, HARR, RECTOR.
ROW 2. WEBB, JOHNSON, CARTWRIGHT, MARNEY, HART, WHITE.

SEASON'S RESULTS

WILDCATS 27	ASHERTON 18
WILDCATS 28	BIG WELLS 11
WILDCATS 27	FORT CLARK 10
WILDCATS 37	LA PRYOR 7
WILDCATS 33	CATARINA 7
WILDCATS 16	EAGLE PASS 14
WILDCATS 35	BRACKETTVILLE 20
WILDCATS 27	PEARSALL 16
WILDCATS 23	YANCEY 20
WILDCATS 16	EAGLE PASS 19
WILDCATS 31	ASHERTON 7
WILDCATS 30	BIG WELLS 6
WILDCATS 23	EAGLE PASS 22
WILDCATS 36	COTULLA 28
WILDCATS 29	SAN FELIPE 31
WILDCATS 36	CAMP WOOD 47
WILDCATS 32	PEARSALL 17
WILDCATS 41	BIG WELLS 6
WILDCATS 52	CATARINA 13
WILDCATS 38	ASHERTON 14
WILDCATS 23	PEARSALL 28
WILDCATS 23	DILLEY 16
WILDCATS 31	SAN FELIPE 33



WILLIAM LANDRUM, CAPTAIN



KITTENS



ROW 1. KARDLEY, BELL, CATHCART, CALLAHAN, WILLIAMS, EHLERS, OWEN, SHARP
ROW 2. ANDERSON, LANSFORD, SHARP, TEMPLER, BELL, AYERS, WILLEMS, MATHIS, SIMS

SEASON'S RESULTS

KITTENS 36-----	LA PRYOR	25
KITTENS 38-----	LA PRYOR	17
KITTENS 29-----	COTULLA	12
KITTENS 17-----	ROTARY ANNETTES	11
KITTENS 21-----	COTULLA	14
KITTENS 40-----	LA PRYOR	15
KITTENS 31-----	BIG WELLS	6
KITTENS 23-----	ROTARY ANNETTES	9

WINNERS OF KITTEN INVITATION TOURNAMENT
WINNERS OF COTULLA INVITATION TOURNAMENT



HELEN OWEN, CAPTAIN

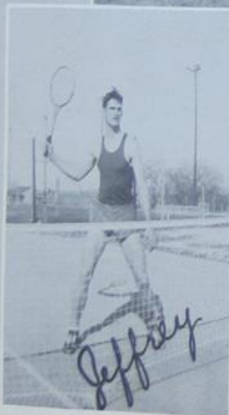




**T
R
A
C
K**



**T
E
N
N
I
S**





1. Would-be Garbos.
2. Caught Short.
3. This Merits A Demerit.
4. Imogene and Howard.
5. The Purple and Gold
6. It did happen here!
7. Shoe-Shine Boy.
8. Just A Schoolgirl At Heart.
9. This might be you.
10. Just Jane!

ⁱⁿ
CARRIZO
HARDWARE
STOVES
RADIOS
&
RH. WILLIAMS

BEST
COMPLIMENTS

◆ of ◆

AJ Knaess

THE
TEXAS THEATRE

ⁱⁿ
CARRIZO SPRINGS
"ALWAYS A GOOD PICTURE"

John M. Stahl

KEITH and ROBERTS
5¢ to \$1.00 STORE
J.L. WALKER, MGR.
CARRIZO SPRINGS, TEX.

Best Wishes
SENIORS
from
ANITA-DRESS SHOP
PAULINÉ BEAUTY
SHOP

CENTRAL PHARMACY

FRANK · DOCTOR · JOHN · JIM · EVELYN
AT YOUR SERVICE

STYLE SHOP

}}}

SHOP · WITH · NELL

AND

YOU'LL · LOOK · WELL

SPEERS
RED ^{AND} WHITE
GROCERY

WE · SPECIALIZE · IN
SANITATION
^{AND}
HEALTH

CENTRAL · POWER · ^{AND} · LIGHT · CO.

ELECTRICITY
YOUR · CHEAPEST · SERVANT



LEONARD · FUNERAL HOME

SERVING · THE · WINTER · GARDEN · DISTRICT

PHONE · 16

CARRIZO · SPRINGS · TEXAS

COMPLIMENTS OF
GRANT LUMBER ·
BUILDING MATERIALS
FINN · WADE, MANAGER

CONGRATULATIONS TO
SENIORS
GOOD WISHES TO
SCHOOL

"RED" DAY
^{FOR}
SINCLAIR

WINTER · GARDEN LIFE · INSURANCE

CATS HAVE NINE LIVES
YOU BUT ONE

OVER \$65,000⁰⁰ PAID · IN · CLAIMS
INSURE AND · BE · SURE

CARRIZO FURNITURE CO.

HOME FURNISHINGS

CASH OR EASY PAYMENT PLANS

YOU'RE SUPPOSED TO LAUGH —

POEMS

A Hot One
Deke took his aunt out riding,
Though icy was the breeze.
He put her in the rumble seat
to see his anti-freeze.

**22 Items for Successful
Dating**

2 arms
2 lips
8 cylinders
10 bucks

Total 22

I love to see a man drying
dishes MRS. PRIDGEN
I love to see a man. BETTY
CALLAHAN
I love to see. MR. WILLIS
I love. GENE HARR
I. ANNETTE TUMLINSON

Miss Dorsey: What do you mean
you're like Napoleon.
Zula F.: Well, I went down in
history.

Eavesdropping again, said Adam,
as his wife fell out a tree.

Glenn: Where is the best place
to hold the world's fair.
William L.: Around the waist.

Sez a Fish
Time was when we were young,
Maggie
But we're grown old somehow,
We'll have to adjust ourselves,
Maggie
For we are Sophomores, now.

Notice, Miss Sims
The gum-chewing girl
And the cud-chewing cow
Are somewhat alike,
Yet different somehow.
But how can that be?
Oh, yes, I see now—
It's the calm-thoughtful look
On the face of the cow.

Mrs. Branch: If I have talked
too long, it's because I
haven't my watch with me.
Jack Jeffrey: There's a calendar
behind you.

Ray DuBose: I'm indebted to you
for all I know.
Mr. Pridgen: Don't mention such
trifles.

Dr. Kimble: Do you have any
soars on you?
Houston M.: No, but I can give
you a cigarette.

Ruby Sharp: (reading in English)
"He turned and looked at me."
Harold L.: Poor Guy.

Wasted Shot

There was once a man who was out gunning in the alps. Sighting an eagle, he took aim and brought the bird down. As he was retrieving his game, a second man rode up on a horse.

"My good man", said the man on the horse to the hunter, "you should have saved your shot. The fall alone would have killed the eagle."

WILDENTHAL-
CARPENTER
AGENCY
CARRIZO SPRINGS, TEX.
Insurance of all kinds.

COMPLIMENTS
OF
Ace A. Kimble

It's
THE GREEN LANTERN
ask anybody! 

COMPLIMENTS
of
HANDY ANDY

STERN'S
"A GOOD PLACE TO TRADE"

Picely Wicely
"SHOP & SAVE"
DE ROYCE GIBSON, MGR.

ORROR'S
LAUNDRY
and
DRY CLEANING
Phone 222

HOUSTON MARNEY
GARAGE
and
SERVICE STATION

THE
CITY DRUG
"ON THE SQUARE"

FROM A
FRIEND

BRIGHT SAYINGS AND FUNNY CRACKS

Miss Walker: You should know how to write a letter to a high official, as it might come in handy some day.
Perrin F.: Yeah, boys, we might want a pardon some day.

- PUNS THAT WERE NEVER PULLED
1. Annapolis a day'll keep the doctor away!
 2. I'm from the navy! Oh! you nautical man.
 3. The radio is just a home for the old jokes.
 4. Let's go down and get a Harr out.

LAMENTATIONS

My parents tele me not to smoke,
I don't.
Ner listen to a naughty joke,
I don't.
They tele me I was not to wink
At pretty girls ner even think
Of intoxicating drink,
I don't.
To dance and flirt is very wrong,
I don't.
Wild boys chase wine, women and song,
I don't.
I kiss no girl, not even one.
In fact, I don't know how its done.
You wouldn't think I have much fun,
I don't.

THE SPACE BELOW IS LEFT FOR YOU TO WRITE YOUR OWN JOKES
IN CASE YOU DON'T LIKE OURS.

IN COMMERCIAL CLASS

"Buck" Jones: This test in Law is too hard!
Mr. Pridgen: Ignorance of the law is no excuse, Jones.

Miss Walker: Which do you get the most out of, a twenty-minute speech or an hour one?
Perrin F.: The hour one, because you get forty minutes more sleep.

Mr. Byers recently ordered his tailor to make him a three piece suit. He put all three pieces in the trousers.

The boy stood on the burning deck,
Relief boats blew their horns.
Alas! The poor boy couldn't move,
The heat had popped his corns.

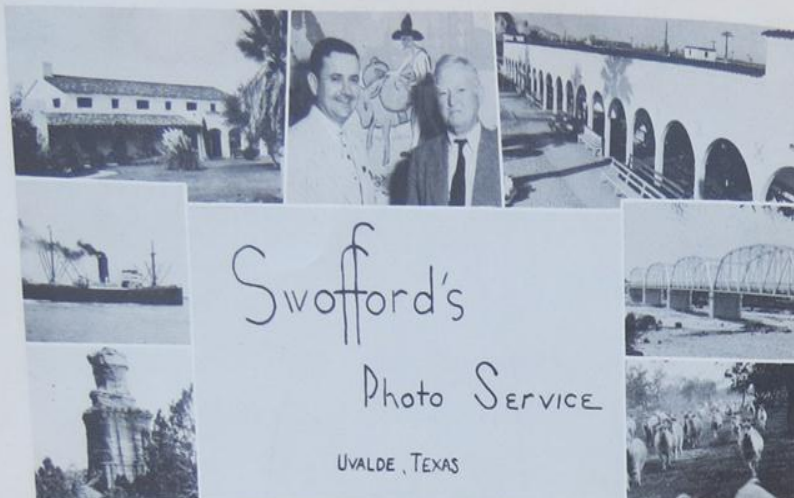
LOVEBIRDS

Jack and Harriet
Glenn and Dorothy
Houston and Pearsall
Gene and the Freshman Girls
William and Dixie (???)
Marjorie Ehlers and Anybody.
Betty Jo and South America.



1. OUTSTANDING ACTOR.
2. WAY UP THAR.
3. CAMERA SHY.
4. TAKING A STROLL.
5. HI-Y -OH YEAH?
6. PIGGY BACK.
7. A SURE-SHOT.

8. MICKEY AND MABEL IN CLASS.
9. WHERE'S THE DEER?
10. SIMSY AT A BULL FIGHT.
11. READY TO RETIRE.
12. JUMP HIGH.
13. A TENSE MOMENT.
14. IT'S NOT THAT DEEP.



Swofford's
Photo Service
UVALDE, TEXAS



FOR BETTER CLEANING
RIGHT WAY CLEANERS
Mack Lester - Prop.



NO MONKEY BUSINESS
WHEN YOU TRADE AT

**DIMMIT SUPPLY
COMPANY**

1939 Wildcat Yearbook

