



1941

Wildcat Yearbook

Carrizo Springs CISD

The
Wildcat
1941



THE WILDCAT



Published by the Students of
CARRIZO SPRINGS HIGH SCHOOL
Carrizo Springs, Texas

1941

FOREWORD



"Time has wings, but memories remain." So it is, as C. S. H. S. celebrates the closing of another school year, we may think of 1941 as having gone; but the experiences which have made this year so pleasant and fruitful will remain preserved in the hearts of those who have known and loved C. S. H. S. It has been the aim of the 1941 Wildcat to preserve in pictorial and printed form a few of the highlights of this closing year.

Zula Thomas, Editor



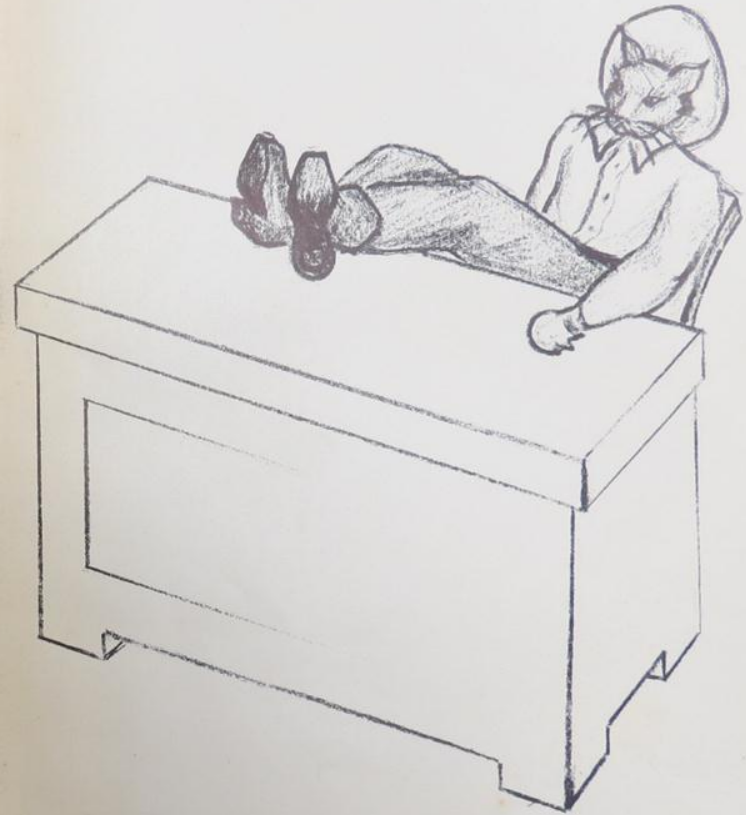
H. E. SULLIVAN

DEDICATION

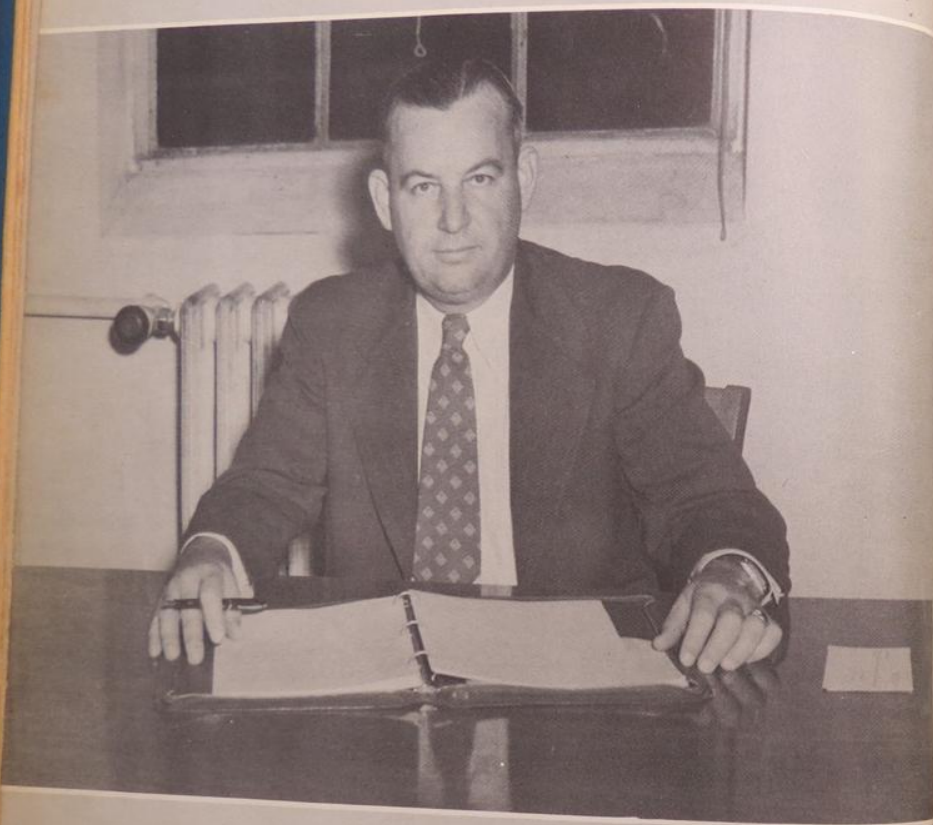
Behind every worthwhile project there are those who have given fully and nobly of their time and energy in order that success and achievement might be possible. In acknowledgment of his fine services to C. S. H. S., we gratefully dedicate this, the sixth volume of "THE WILDCAT," to our superintendent, H. E. Sullivan.

THE STAFF

ADMINISTRATION



THE SCHOOL



H. E. SULLIVAN

OUR SUPERINTENDENT



W. M. PRIDGEN, HIGH SCHOOL

OUR PRINCIPALS



SYBIL MAE GOUGH
EAST WARD



C. P. ULBRICH
CENTRAL WARD



LOIS HARPER
Physical Education
JESSE LOCHAUSEN
History, Math, Ass't. Coach
VELMA HILL PRIDGEN
Spanish, English

HOMER UTLEY
Public Speaking, English
GEORGIA DORSEY
Social Studies
BERRY EHLERT
Science, Math, Coach



DOROTHY HANKWITZ
English, Art
MOZELLE FAULK
Second Grade
JEANETTE CARNES
Fourth Grade

BETH JEFFREY
Fourth Grade
MRS. BELLE TAYLOR
First Grade
MRS. REBECCA BRANCH
Reading, Spelling



FACULTY

FACULTY

RUTH ADAMS
Social Studies

MARY HICKERSON
East Ward

ANNIE LOUISE TUTTLE
Third Grade

THOMAS YOKUM
History, Orchestra

MRS. SALLY BURKETT
Home Economics

FELIX BURTON
Vocational Agriculture



WALLACE BYERS
Band, English

MARY FRAZIER
Second Grade

VERNA WALKER
English, Librarian

MRS. P. G. GARDNER
East Ward

MRS. DORA MYER
East Ward

MRS. LAURENCE QUINCY
East Ward

MRS. ELVIRA SILVAS
East Ward



H. E. SULLIVAN
Superintendent



JOHN STAHL
Secretary



BRUCE LEONARD
President

SCHOOL BOARD

ERSKINE RHODES
Trustee

M. P. LESTER
Trustee

BEN COOK
Trustee



BILL RUSSELL
Trustee

CLASS FAVORITES





BRUCE LEONARD
President



H. E. SULLIVAN
Superintendent



JOHN STAHL
Secretary

SCHOOL BOARD



ERSKINE RHODES
Trustee

M. P. LESTER
Trustee



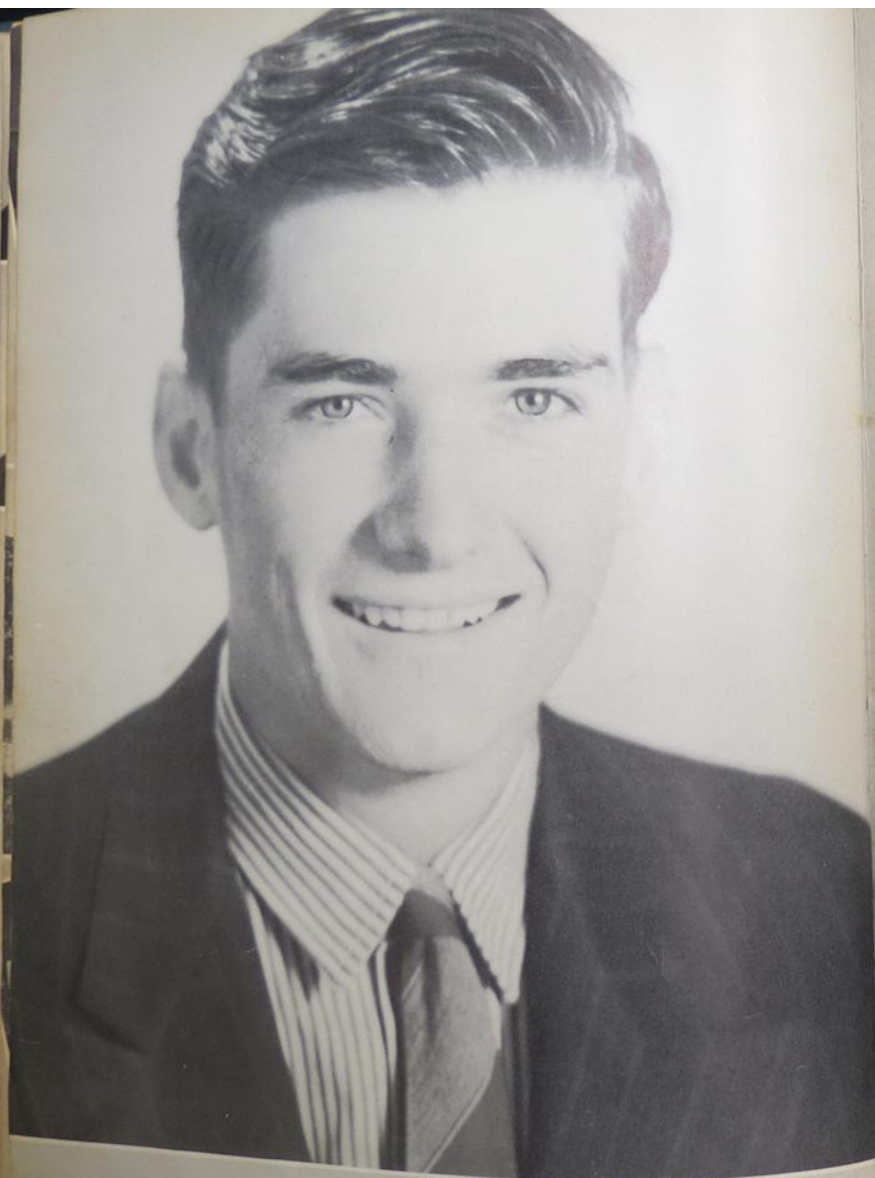
BEN COOK
Trustee



BILL RUSSSETT

CLASS FAVORITES

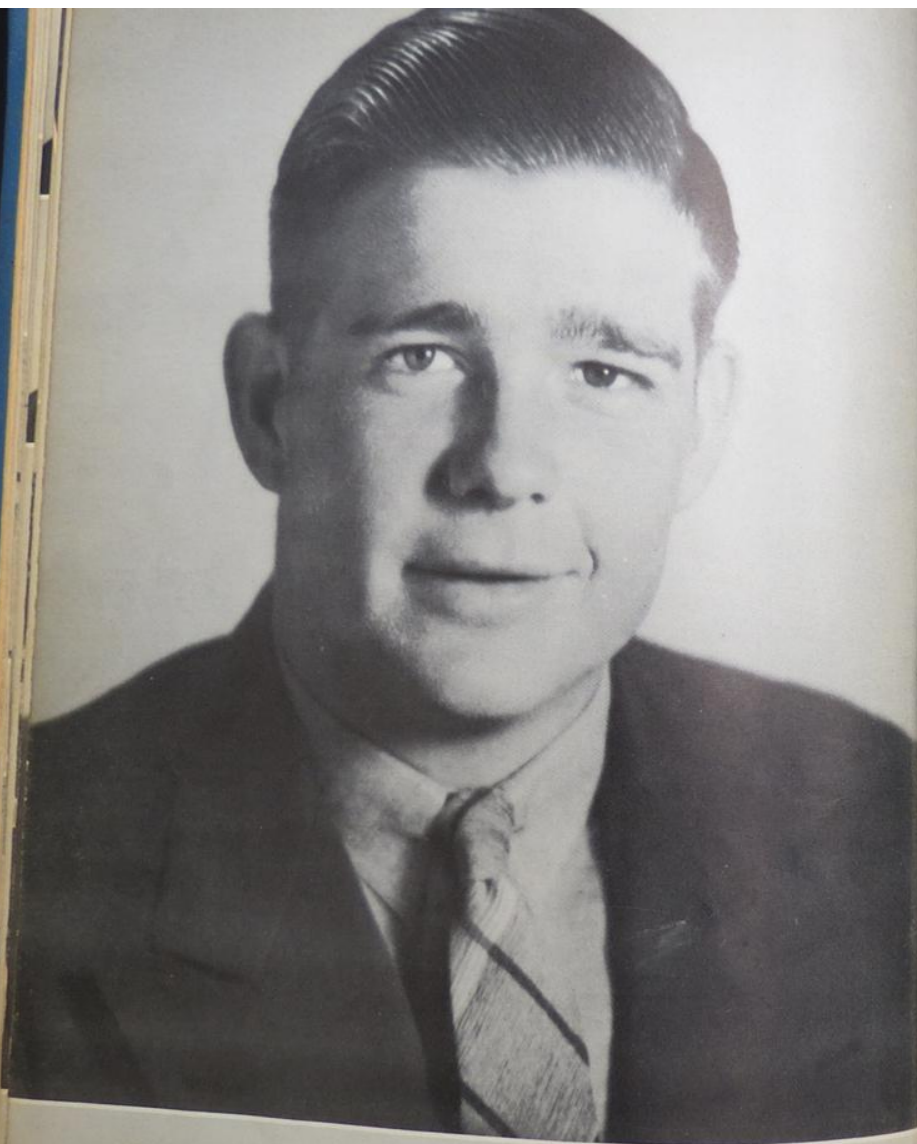




HOWARD BOSTIC - Best All-Round



FRANCES McROREY - Best All-Round



BILL FRAZIER - Most Popular Boy



VELMA JO WILLIAMS - Most Popular Girl



JUNIOR FAVORITE
Richard Tumlinson

SOPHOMORE FAVORITE
Earl McClendon



FRESHMAN FAVORITE
Bill Mullins



JUNIOR FAVORITE
Opal Box



SOPHOMORE FAVORITE
Betty Jane Fain



FRESHMAN FAVORITE
Martha Ruff





Fair Queen - MARILEA MARNEY



Mary Jo Lindley - Pep Squad



Josephine Cook - Band

Velma Jo Williams - Band

DRUM MAJORS

Loraine Mitchell - Band



CLASSES



SENIORS



FRANCES McROREY
Vice-President



GORDON WILLIAMS
President



VELMA JO WILLIAMS
Secretary

BILL FRAZIER
Social Chairman



MISS GEORGIA DORSEY
Sponsor



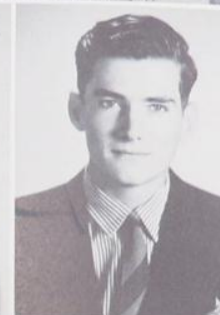
MERILYN ABBOTT
F.H.A. 1,2; Glee Club 1,2; What's Right Club 4; Games Club 4; Pep Squad 1,2,3,4; Tennis 2; Volley ball 1,4; Class Secy. 1; Kitten Assn. 4.



MARY LILLIAN AYERS
Spanish Club 4; F.H.A. 1,2; Band 3, 4; What's Right Club 4.



IRENE BELL
F. H. A. 1,2; Fold Dance Club 4; What's Right Club 4 (Rep. 4); Kit Kat Staff 3; Kitten Assn. 3,4 (Pres. 4); Basketball 3,4; Glee Club 4; Pep Squad 1,2,3,4; Volley ball 4; Games Club 4; Hi-Y 3.



HOWARD BOSTIC
Football 3,4; "C" Assn. 3,4; F.F.A. 1; Annual Staff 4; Gun and Rod Club 4; Athletic Club 4; Press Club 4; Junior Soft Ball 1,2.

JOHN CHURCHILL
Glee Club 4; Domino Club 4; F.F.A. 1,2,3,4 (V.P. 3, Pres. 4); Spanish Club 2.



JOSEPHINE COOK
Band Drum Major 2,3,4; Band 1,2,3, 4; Orchestra 3,4; Treas. F.H.A. 4; Pep Squad 1; Spanish Club 2; Folk Dance Club 4; Volley Ball 1.



BILL FRAZIER
Football 3,4 (Capt. 4); Basketball 3; Track 3,4; F.F.A. 1,2,3,4; "C" Assn. 3,4 (Pres. 4); Athletic Club 4; Baseball 1,2.



LEONARD GRAY
President Tennis Club 4; Curtain Club 4; Glee Club 4; F.F.A. 1,2,3; Basketball 4; Baseball 1; "C" Assn. 4; Declamation 1,2,3,4; Tennis 2,3, 4.





ALLEN HELLSTEN

Football 3,4; F.F.A. 1,2,3,4 (V. P. 4); Athletic Club 4; "C" Assn. 3,4; Track 3; Baseball 1.



EVELYN JONES

F.H.A. 1,2,3,4, (V.P. 3, Sgt. at Arms 4) Baseball 1,2, (Capt. 2); Sgt. at Arms of Folk Dance Club 4.

ELENE LANSFORD

V.P. Tennis Club 4; Kitten Assn. 3,4 (V.P. 4), Basketball 4; Gun and Rod Club 4; Tennis 2,3,4; F. H.A. 1; Hi-Y 1,2,3; Glee Club 1; Pep Squad 3,4; Kit Kat Staff 3; Volleyball 4.

MARY JO LINDLEY

F.H.A. 1,2 (Secy. 2); Duchess 2; Princess 4; Bus. Mgr. Press Club 4; Pep Squad 1,4 (Drum Major 4); Band 2,3 (Drum Major 3); Annual Staff 3,4 (Bus. Mgr. 4); Tennis 1,4; Who's Who 4; Curtain Club 3, 4 (Pres. 4); District One-Act Play 3; Class Pres. 2; Class Favorite 3; Glee Club 4; Hi-Y 1.

GWENDOLYN NEW

F.H.A. 1,2; Glee Club 1,2,4 (Pianist 2); Band 4; Secy. Games Club 4; Hi-Y 2,3; Secy. What's Right Club 4.

CATHERINE O'MEARA

F.H.A. 1,2,4 (Secy. 4); Pep Squad 1,2,3,4; Folk Dance Club 4; Spanish Club 2.

WILLIAM ORR

F.F.A. 1,2,3,4 (Rep. 4); President Athletic Club 4; "C" Assn. 3,4; Football 3,4; Track 3,4.

ALFREDO SANCHEZ

F. F. F. 1,2.



MARIA LOPEZ

F.H.A. 1,4; Spanish Club 2,3,4; Pep Squad 4.

MARY LOUISE McLENDON

Vice-Pres. of Class 1,3; Spanish Club 2,3,4 (V.P. 4); Glee Club 1, 2,4; Band 3,4; Band Clinic 4; Pep Squad 1,2; Curtain Club 4; Typing 3; Annual Staff 4; Hi-Y 1,2,3 (Secy -Treas. 1); Orchestra 4.

FRANCES McROREY

Class Secy. 2; Class Pres. 3; Class V-Pres. 4; F.F.A. Sweetheart 4; Pres. What's Right Club 4; Pres. Games Club 4; Hi-Y 1,2,3; Mgr. Basketball 4; Pep Leader 4; Pep Squad 2,3,4; Kitten Assn. 4; Princess 4.

LORAIN MITCHELL

F.H.A. 1; Pep Squad 1; 1st in Spelling 1; V.Pres. of Class 2; Hi-Y 1,2,3; Band 2,3,4 (Drum Major 3,4) State Band 4; Glee Club 1,2,4; Spanish Club 2,3,4 (Pres. 4); Annual Staff 4; Curtain Club 4; Who's Who 4; Orchestra 4.



ROBERT SCHMITZ

Football 2,3; F.F.A. 1,2,3,4 (Song Leader 4); "C" Assn. 4; Athletic Club 4; Domino Club 4; Baseball 2,3.

JEANETTE SHARP

F.H.A. 1,2; Kitten Assn. 1,2,3,4 (Secy-Treas. 4); Kit Kat Staff 2, 3, (Bus. Ed. 3); Hi-Y 1,2,3; Glee Club 1,2; Pep Squad 1,2,4; Volleyball 1,2,3,4; Basketball, 3,4 (Capt. 4) Baseball 1,2; What's Right Club 4; Vice-Pres. Games Club 4; Spelling 1,2,3.

WILLIAM AARON SHIVELY

Track 3; Tennis 4; F.F.A. 1,2,4; Domino Club 4; Baseball 1,2; Orchestra 4; Band 3,4.

PEGGY SPIELMAN

F.H.A. 1,2,3; Literary Editor Press Club 4; What's Right Club 4; Pep Squad 2,3,4.





MARVIN STONE

Tennis 2,3,4; Curtain Club 2,3,4 (V.Pres. 4) F.F.A. 1,2,3,4 (Secy 4); Tennis Club 4; Glee Club 4; Pres. of Class 1; Class Favorite 3; Declamation 1,2; District One-Act Play 2.



JOYCE STRIPLING

Glee Club 1,2,4; Lead in "And Mary Did" 3; Who's Who 4; Pub. Mgr. and Typist Press Club 4; Hi-Y 1,2,3; Declamation 1,2,3; Cyrtain Club 2,3,4; Annual Staff 4; Pep Squad 1,2,3,4; F.H.A. 1; Volley ball 2; Kitty Assn. 4.



MAXINE STUESSY

Spanish Club 2; F.H.A. 1,2; Glee Club 2; Press Club 4; What's Right Club 4; Pep Squad 1,2,3,4; Kit Kat Staff 1.



DOROTHY TEMPLER

F.H.A. 1,2,4 (Rep. 4); Pep Squad 1,2,3; Band 3,4; Spanish Club 2; Folk Dance Club 4.



ZULA THOMAS

Pep Squad 1,2,3,4 (Bus Mgr. 3,4); F.H.A. 1,2; Glee Club 1,2,4; Annual Staff 2,3,4 (Editor 4); Editor of Press Club 4; Curtain Club 3,4 (Property Mgr. 3,4).

BOBBY TOCQUIGNY

Tennis 2,4; Band 1,2,3,4; 1st in County Typing 3; F.F.A. 1,2,3; Gun and Rod Club 4; Tennis Club 4; Track 3.



ANNETTE TURLINSON

Pep Squad 1,2; Spanish Club 2; Band 3,4; Folk Dance Club Reporter 4; Typing Team 3; Kit Kat 2; F.H.A. 1,2,4 (V.Pres. 4); Class Reporter 4; Glee Club 2.

VIRGINIA TURNER

F.H.A. 1,2,4; Folk Dance Club 4; Pep Squad 1,2,4.



GORDON WILLIAMS

Football 3,4; Athletic Club 4; Class President 4; "C" Assn. 3,4 (V.Pres. 4); F.F.A. 1,2,3,4; Jr. Tennis 2; Baseball 1,2; Annual Staff 4.

VELMA JO WILLIAMS

Class Secretary 3,4; Annual Staff 4; Tennis 1,4; F.H.A. 1,2,4 (Pres. 4); Glee Club 1,2,4; Pep Squad 1,2; Band 2,3,4 (Drum Major 4); Spanish Club 2; Folk Dance Club 4; Orchestra 3,4; State Band 4.



ESPERANZA VILLANUEVA

Spanish Club 2,3,4; F.H.A. 1,2; What's Right Club 4; Pep Squad 1,2,4.

MARY ELLEN WHITE

F.H.A. 1; Spanish Club 2,3,4 (Treas. 4); Pep Squad 1,2; What's Right Club 4; Hi-Y 1,2,3.

JANE WILLEMS

Tennis 4; F.H.A. 1,2; Pep Squad 1,2; Volley Ball 1,4; Spanish Club 2,4; What's Right Club V.Pres. 4; Baseball 1,2; Hi-Y 2,3.





DIGNIFIED SENIORS IN EARLIER YEARS
 Can you identify the seniors pictured above? Test your skill. Count five points for each one you name. A score of 80-90 is excellent, 70-80, good, 60-70, fair, 50-60 poor. If you make below 50, you should take a course in child psychology.



VERNER WILLIAMS
 Vice-President



CLIFFORD DAVIS
 President



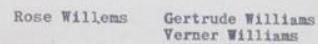
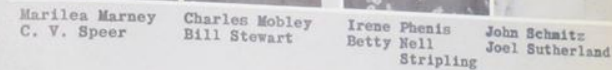
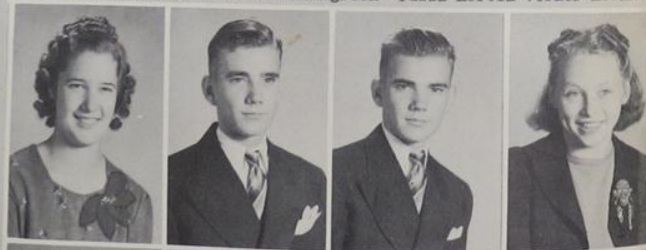
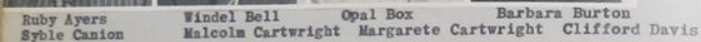
OPAL BOCK
 Secretary

JUNIORS

LEE ANN HALL
 Social Chairman

MR. BERRY EHLEST
 Sponsor







CHARLES JOHNSON
Vice-President



EARL McCLELLON
President



ELIZABETH DANIEL
Secretary

SOPHOMORES

AJIN TITSWORTH
Treasurer



VERDA MAE HART
Social Chairman



MR. JESSE LOCHAUSEN
Sponsor



George Bailey Juanita Bladwin Jimmie Lee Becker Patsy Ruth Bell
Vernon Blackard Ethel Brauchle Emma Cantu Annabelle Cathcart

Elizabeth Daniel
Sotero Gomez



Boyd DeSpain
Eugene Green



Betty Jane Fain
Verda Mae Hart



Jocie Pearl
Fielder
H. V. Hasten





Paula Dale
Hellsten
Floy Lee Mear

Dorothy Ivey
Grant
Mendenhall

Charles Johnson
Earl McClendon

Billy Ray Love
Wheeler Petty

Feliz Salinas Vida Jo Sharp Ann Titsworth Margaret
Earl Tumlinson Marcelo Uriegas Edith Webb Stamper



TOM FARRIS
Vice-President



LORALEE TEBBE
President



BILL MULLINS
Secretary

FRESHMEN

SELMA JANE ANDERSON
Social Chairman



MR. HOMER UTLEY
Sponsor





selma jane anderson

herlinda berumen

richard bilderback



darrel canion

blanca cantu

pedro castellanos



robert frazier cook

georgie dickens

florinda duran

bill james

sam kellogg

frances long



dora martinez

jane martinez

juan martinez



mickey martinez

pedro martinez

feland meadows



patsy ann dustin

tom farris

dorothy lee fielder



isidoro menchaca

jack mitchell

kathryn moffett

fred forehand

tom garza

leatrice gray



jean moorman

bill mullins

gladys norwood

sybil horton

sylvia horton

paula jean howard



odilia olvera

gus orr

w. o. palm



mary ellen patrick

patricia jean patrick

flossie rhodes

marjorie riecker

martha ruff

lewis schmersohl

ruby smith

john sorrell

shirley beth speer

george stinnett

georgia stone

victor stone



loralee tebbe

virginia tollett

george vargas



bob ward



ATHLETICS





BILL FRAZIER
Captain



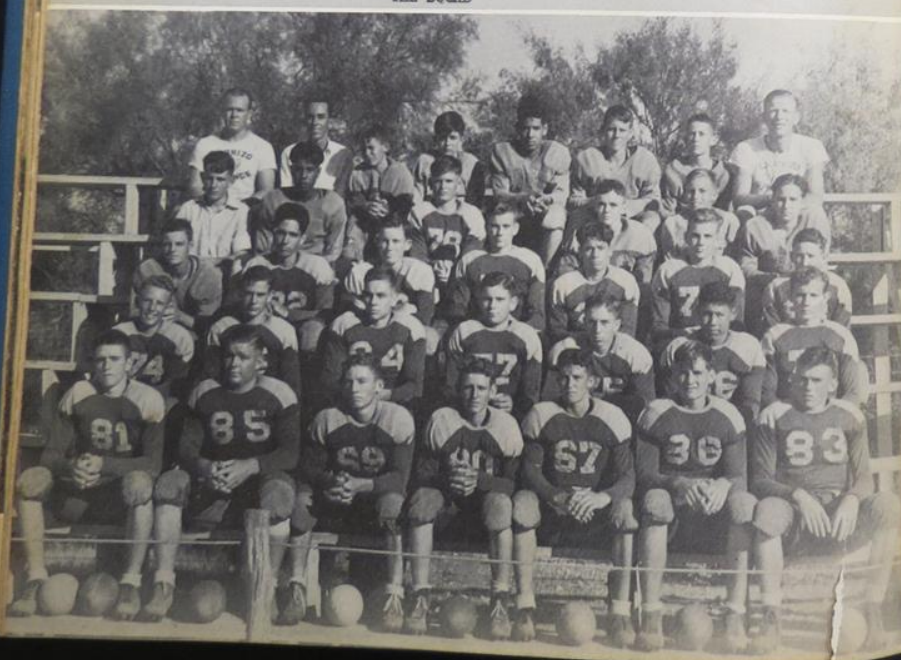
BERRY EHLERT
Coach



JESSE LOCHAUSEN
Ass't. Coach

FOOTBALL

THE SQUAD



GORDON WILLIAMS
Guard



WILLIAM ORR
End



HOWARD BOSTIC
Tackle



BILL FRAZIER
Tackle

ROBERT SCHMITZ
Center



1940 FOOTBALL SEASON

Sept. 13.....	Bracketville 0.....	Wildcats 0
Sept. 20.....	Uvalde.....0.....	Wildcats 12
Oct. 4.....	Hondo.....18.....	Wildcats 0
Oct. 11.....	Sabinal.....0.....	Wildcats 40
Oct. 18.....	San Felipe.....6.....	Wildcats 13
Oct. 25.....	Pearsall.....20.....	Wildcats 6
Nov. 1.....	Eagle Pass.....0.....	Wildcats 0
Nov. 8.....	Cotulla.....7.....	Wildcats 0
Nov. 15.....	Crystal City 0.....	Wildcats 28
		51
		99

Won 4.....Tied 2.....Lost 3

ALLEN HELLSTERN
Halfback



RICHARD TURLINSON
Quarterback



MALCOLM CARTWRIGHT
Fullback



JACK BUTLER
Guard



EARL McCLARDON
End





EARL TUMLINSON
Quarterback



SOTERO GOMEZ
Halfback



SAM FLEMING
Tackle



BEN FLEMING
Center



CHARLES JORDISON
Tackle

The Wilcats opened the 1940 season with lots of power on the defensive but had trouble developing a stable offense. At times they looked like champions, and then the pendulum would swing toward the other extreme. They played a great game against Pearsall, the regional champion for 1940, and might have fared better in other games but for costly fumbles. Against Crystal City, our traditional grudge game, the Wilcats clicked to the last man. With all the backs except Hellsten returning for 1941, the Wilcats should have a great offensive ball club in 1941.



WINDEL BELL
Managers

C. V. SPEER



Mascot



Richard gains against Uvalde



Uvalde Bonfire



S. Fleming, Mendenhall, Bailey, Ward, Lochausen (coach)
Bell, R. Tumlinson, E. Tumlinson, Cartwright, Bostic

BASKETBALL



Wildcats win from Uvalde

BOYS BASKETBALL SEASON

E. Tumlinson, Captain



Wildcats	23-Eagle Pass	22	Wildcats	27-Uvalde	13
"	13-Eagle Pass	20	"	31-Pearsall	32
"	18-Cotulla	9	"	28-Laredo	48
"	23-Cotulla	25	"	33-Laredo	53
"	20-San Felipe	13	"	16-Bracketville	19
"	11-Eagle Pass	16	"	16-San Felipe	21
"	23-Caterina	15	"	30-Eagle Pass	18
"	35-Asherton	8	"	22-Eagle Pass	14
"	27-Caterina	9	"	21-San Felipe	34
"	40-Asherton	10	"	37-Eagle Pass	32
			"	14-Lytle	41

Won 11.....Lost 10

LETTERMEN

Gray-----Forward
R. Tumlinson--Center
Cartwright---Guard
M. Bell-----Guard

Harper (coach), Tebbe, B. Stripling, Hellsten, Abbott
J. Stripling, McKorey, Mgr., Marney, V. Sharp, I. Bell, J.
Jeanette Sharp, M. Sharp, P. Bell, Hart
Captain





Lochusen (coach), Williams, Lansford, Lindley, Sharp, Cartwright, Bell
Mendenhall, Tocquigny, Stone, Gray, Shively

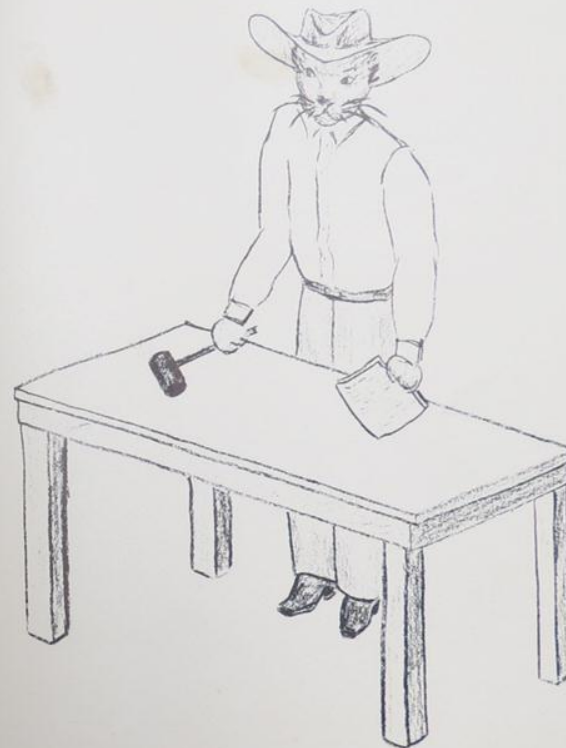
TENNIS

TRACK

Mathis, Uriegas, Mobley, Williams, Mullins, Ehler (coach)
E. Tumlinson, McClendon, Cartwright, Bell, Orr, E. Tumlinson



ORGANIZATIONS





GEORGIA DORSEY, SPONSOR

ZULA THOMAS, MANAGER

PEP SQUAD

Mary Jo Lindley
Drum Major
Opal Box Leader Frances McRorey Marilea Marney Joel Sutherland
Leader Leader Leader Leader



DIRECTOR.....WALLACE BYERS

BAND

DRUM MAJORS
Josephine Cook
Loraine Mitchell Velma Jo Williams





CURTAIN CLUB



MARY JO LINDLEY
President

MARVIN STONE
Vice-President

MARILEA MARNEY
Secretary

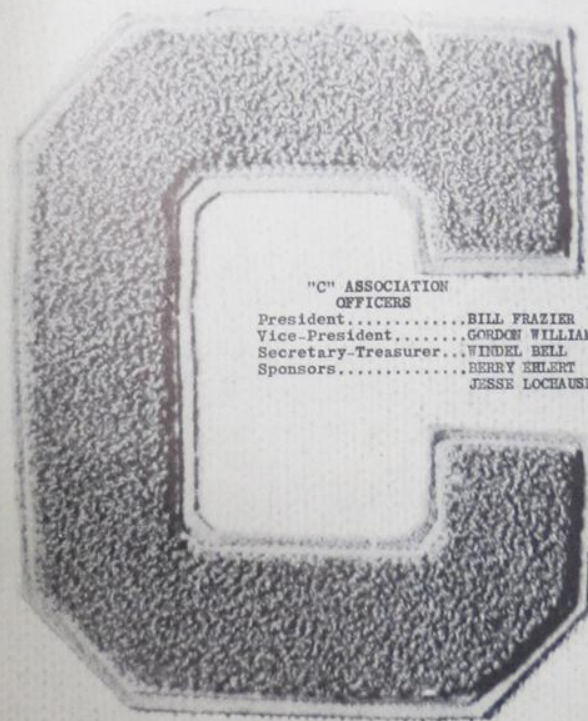
ZULA THOMAS
Property Mgr.

WINDEL BELL
Stage Mgr.



MACIE BELL
HOWARD BOSTIC
JACK BUTLER
MALCOLM CARTWRIGHT

BEN FLEMING
SAM FLEMING
SOTERO GOMEZ
LEONARD GRAY



"C" ASSOCIATION OFFICERS

President.....BILL FRAZIER
Vice-President.....GORDON WILLIAMS
Secretary-Treasurer...WINDEL BELL
Sponsors.....BERRY EHLETT
JESSE LOCHAUSEN

ALLEN HELLSTEN
CHARLES JOHNSON
EARL McLENDON
WILLIAM ORR

ROBERT SCHMITZ
C. V. SPEER
EARL TUMLINSON
RICHARD TUMLINSON



F. H. A. CLUB
 President
 Velma Jo Williams
 Vice-President
 Annette Tumlinson
 Secretary
 Catherine O'Meara
 Treasurer
 Josephine Cook
 Reporter
 Dorothy Templar
 Sponsor
 Mrs. Sally Burkett



F. F. A. CLUB
 President
 John Churchill
 Vice-President
 Allen Hellsten
 Secretary-Treasurer
 Marvin Stone
 Reporter
 William Orr
 Song Leader
 Robert Schmitz
 Sponsor
 Felix Burton



WHAT'S RIGHT CLUB
 President
 Frances McRorey
 Vice-President
 Jane Willems
 Secretary
 Gwendolyn New
 Sponsor
 Georgia Dorsey

GLEE CLUB
 Director
 Lois Harper
 Accompanist
 Homer Utley



ORCHESTRA
 Director
 Thomas Yoakum
 Pianist
 Gwendolyn New



FOLK DANCE CLUB
 President
 Frances McRorey
 Vice-President
 Jeanette Sharp
 Secretary-Treasurer
 Gwendolyn New
 Sponsor
 Georgia Dorsey





GUN AND ROD CLUB
 President
 Earl McClendon
 Vice-President
 Calvin Mathis
 Secretary
 Boyd DeSpain
 Sponsor
 H. E. Sullivan

SPANISH CLUB
 President
 Loraine Mitchell
 Vice-President
 Mary Louise McClendon
 Secretary
 Esperanza Villanueva
 Treasurer
 Mary Ellen White
 Primer Vocal
 Emma Cantu
 Sponsor
 Velma Hill Bridgen



TENNIS CLUB
 President
 Leonard Gray
 Vice-President
 Elene Lansford
 Secretary
 Lee Ann Hall
 Sponsor
 Jesse Lochausen

PRESS CLUB
 Editor
 Zula Thomas
 Asst. Editor
 Opal Box
 Business Manager
 Mary Jo Lindley
 Production Manager
 Joyce Stripling
 Sponsor
 Lois Harper



ATHLETIC CLUB
 President
 William Orr
 Vice-President
 Howard Bostic
 Secretary-Treasurer
 Verner Williams
 Sponsor
 Berry Ehlert

KITTEN ASSOCIATION
 President
 Irene Bell
 Vice-President
 Elene Lansford
 Secretary-Treasurer
 Jeanette Sharp
 Sponsor
 Lois Harper



THE WILDCAT STAFF



EDITOR
Zula Thomas

BUSINESS MANAGER
Mary Jo Lindley



ASST. EDITOR
Opal Box

ASST. BUS. MGR.
Marilea Marney



SPORTS EDITORS



Gordon Williams



Howard Bostic

SENIOR EDITOR
Velma Jo Williams



ASSOCIATE BUS. MGR.
Mary Louise McClendon



CLASS EDITOR
Loraine Mitchell



CLUBS EDITOR
Joyce Striplin



OUR ADVERTISERS



**DIMMIT COUNTY
GROWERS**

Shippers of
**DIMMIT BRAND
VEGETABLES**

CONGRATULATIONS

Bruce E. Leonard

KEITH & ROBERTS

5c TO \$1.00 STORE

ONWARD SCHOOL SUPPLIES

You Can't Beat the Best!

The Best Is
CARRIZO SPRINGS HIGH
AND

Anita Dress Shop
Phone 8

Headquarters for the
W-I-L-D-C-A-T-S

CENTRAL PHARMACY

PHONE 88

PULLEN
FOR THE
WILDCATS

STRIEGLER'S

LAUNDRY AND DRY CLEANING

WE HAVE NO SUBSTITUTE FOR QUALITY

WILDCATS

Go for Girls
Groomed by the

**CACTUS BEAUTY
SHOP**

Compliments of

**CITIZEN
STATE BANK**
Carrizo Springs, Texas

Always for the Wildcats!

Fill up at

"RED" DAY'S
SINCLAIR SERVICE
STATION

**BOYD BARBER
CHEVROLET CO.**

EYE IT!
TRY IT!
BUY IT!

BEST WISHES

EDWARD TAXIN CO.

SUNSHINE CAFE

Steaks our Specialty

Try Our Sunday Dinners

Mexican Food Every Saturday

Hot School Lunches for Children

Joe Schmitt, Prop.

TUNE IN ON THE
WILDCATS

"RED" AYERS

PHILCO SERVICE

Phone 177

Compliments of

WHITE'S

THE
QUALITY
FOOD STORE

Phone 49

BEST WISHES

FOR

C. S. H. S.

A. F. DAVIS

BOOSTING THE WILDCATS

A. EARDLY CO.

LOANS—INVESTMENTS

Compliments

of

A Friend

ANSWERS TO SENIOR BABY PICTURES

- | | |
|----------------------|--------------------------|
| 1. Bill Frazier | 10. Dorothy Templer |
| 2. Miss Dorsey | 11. Peggy Jean Stone |
| 3. Joyce Stripling | 12. Jane Willems |
| 4. Evelyn Jones | 13. Annette Tumlinson |
| 5. Catherine O'Meara | 14. Frances McRorey |
| 6. Loraine Mitchell | 15. Elene Lansford |
| 7. Allen Hellsten | 16. John Churchill |
| 8. Velma Jo Williams | 17. Esperanza Villanueva |
| 9. Zula Thomas | 18. Josephine Cook |

Compliments of

R. H. WILLIAMS

Quality Hardware

STOVES

RADIOS

Phone 57



Congratulations and

Best Wishes for 1941

JOHN H. STAHL

McCormick Deering Farm

Machinery and Implements

International Trucks



BLUE BONNET CAFE

GOOD STEAKS

Our Specialty

Plate Lunch

Short Orders — Sandwiches

John Kirk, Prop.

Phone 145

Style
Trends
You'll
Love
Emphatically

Star in the
Hometown
Ornate
Parade

COMPLIMENTS OF

CITY DRUG STORE

MODERN — COMPLETE — AIR-CONDITIONED

Borden's Ice Cream
DuBarry Toiletries

Pangburn's Candy
Air-Maid Hosiery

RELIABLE PRESCRIPTION SERVICE

PHONE 2

On THE SQUARE

PIGGLY WIGGLY



"The Nation's Most Popular
Advertised Foods"



"A Pleasure to Serve You"



Phone 35

Compliments of

RIGHT WAY CLEANERS

WHERE BETTER
CLEANING IS DONE

M. P. LESTER, Prop.

Phone - - - - - 98

WINTER GARDEN CAFE

Mexican Suppers Every
Saturday Night

Alice Gilbert, Prop.

Compliments of

The TEXAS THEATER

Home of Good Pictures

Phone 96

WILDENTHAL-CARPENTER

AGENCY --- INSURANCE

BONDS - RANCH LOANS - REAL ESTATE

PHONE 72

Serving the Winter Garden
with

GAS

Magic Chef - Electrolux Refrige-
rators - Automatic Ranges -
Pittsburgh Water Heaters

Texas Gas Distributing Corp'n
Phone 113

PLYMOUTH - CHRYSLER

Sales Service

SMITH AUTO PARTS

CONGRATULATIONS

WILDCATS

and Best Wishes
for 1940

HOUSTON MARNEY GARAGE

DAY AND NIGHT
WRECKER SERVICE

Phone 166

Right behind the
Wildcats

DIMMIT SUPPLY CORP.

HARDWARE
FARM IMPLEMENTS
IRRIGATION SUPPLIES

Phone 58

Jack be nimble;
Jack be quick;

When mending shoes,
Jack does the trick.

JACK'S SHOE SHOP

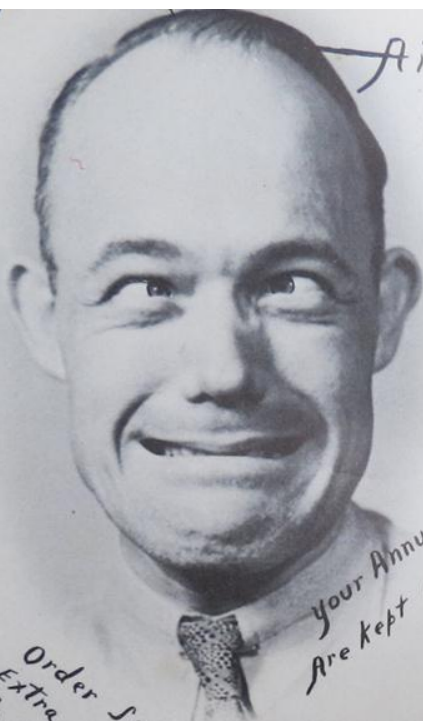
JACK E. HILL, Prop.

STERN'S

Dry Goods
Clothing

and

Star Brand Shoes



Aint it?

*NOT
to have a
photographic
record*

*your Annual Negatives
Are kept On Our Files*

*Order some
Extra Prints
Today*

Swofford's Photo Service
Uvalde, Texas

ODE TO THE STAFF

The student body, as a whole,
Can never really know,
The work, the tears, the headaches, too,
On this yearbook, that never show.

The burning of the midnight oil,
The poor staff's nerves fast wearing down,
The fingers bent from weary toil,
Chaos, confusion raging round

The finished product's what you see,
The finished book, now calm and clear.
But, O, alas, the dear poor staff's
A nervous wreck, oh dear!

