



# **1944**

# **Wildcat Yearbook**

Carrizo Springs CISD

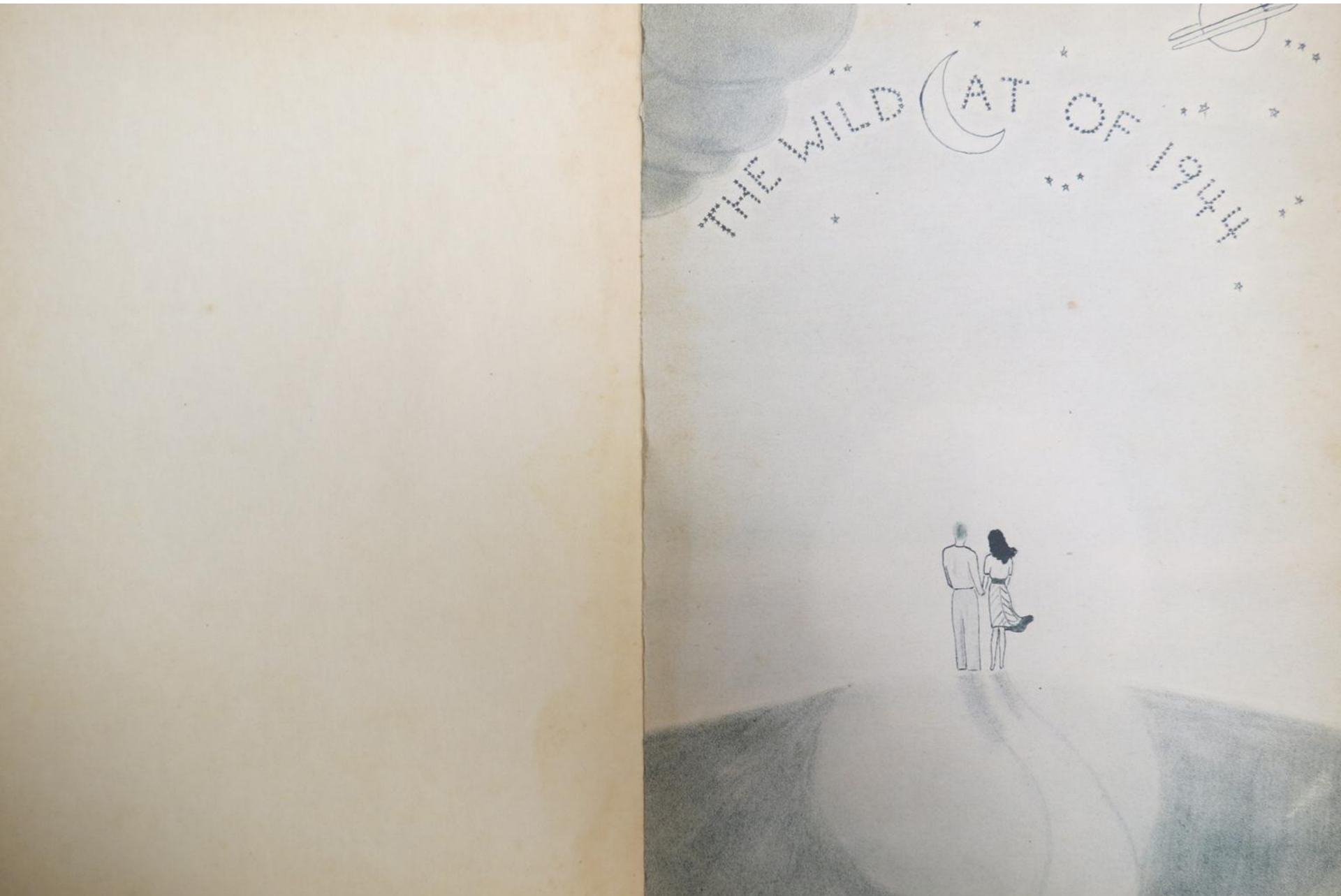
*nineteen*44



**THE WILDCAT**

Greenleaf Center  
Box 189  
N.Y.







CHS



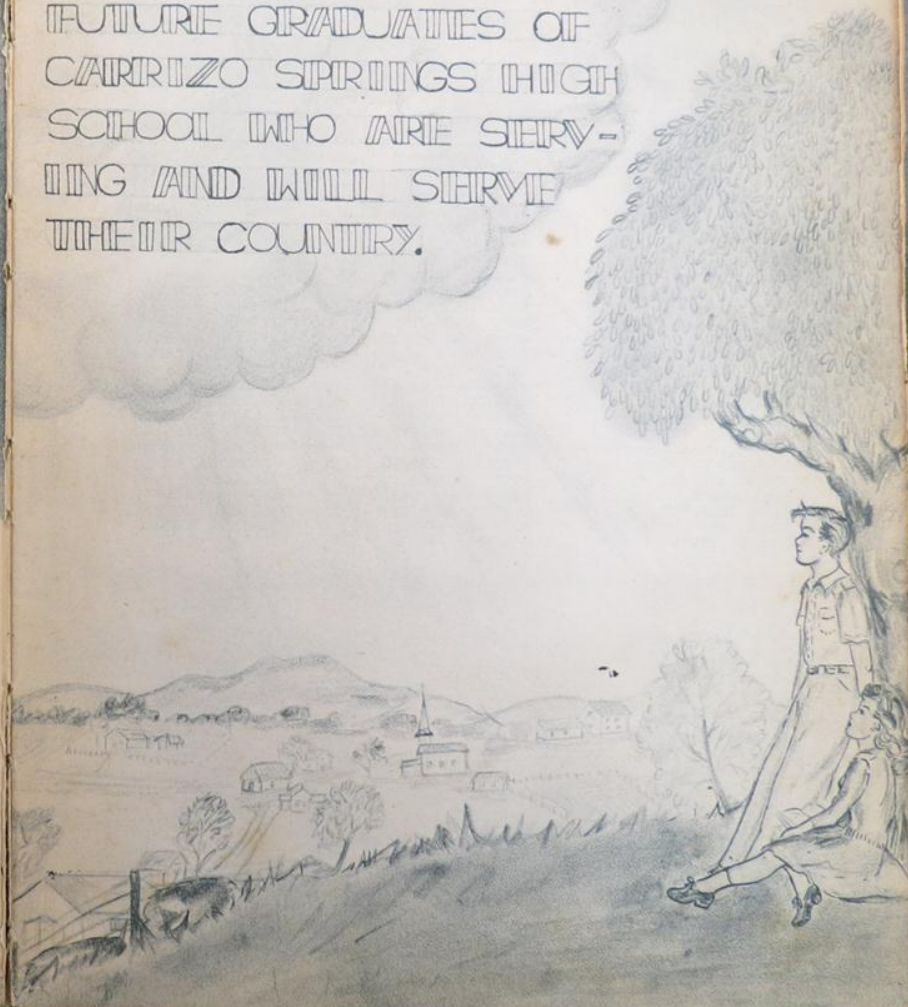
## FOREWORD

AS THE CURTAIN RINGS DOWN ON THE FIRST ACT OF THE STAFF OF 1944 IN ITS DRAMA OF ANNUAL CAREERS, IT IS WITH GENUINE PLEASURE THAT WE PRESENT THIS BOOK OF MEMORIES—STILL FRESH WITH PRINTERS INK. IF THESE PAGES REMAIN PRECIOUS AS A LIVING MEMORY OF OUR HIGH SCHOOL DAYS, THEN OUR ACT WILL HAVE BEEN WELL DONE.

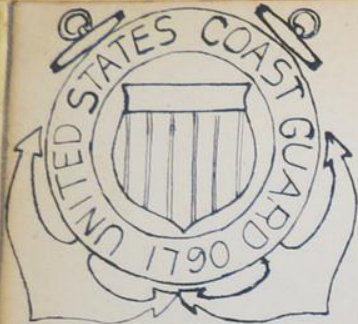
*Dorothy Bell - Editor*

## DEDICATION

THIS BOOK IS DEDICATED TO THE FORMER AND FUTURE GRADUATES OF CARRIZO SPRINGS HIGH SCHOOL WHO ARE SERVING AND WILL SERVE THEIR COUNTRY.







# HONOR ROLL

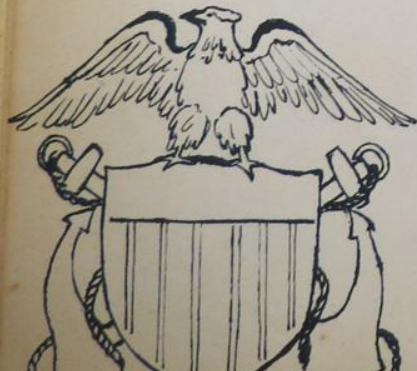


(GRADUATES FROM 1938 TO 1943)

ALLEN, CHARLES  
BARLOW, MELVIN  
BARLOW, WATSON  
BELL, WINDELL  
BLACKARD, WELDON  
BOHAN, JIMMY  
BONHAM, DELMAR  
BOSTIC, HOWARD  
BRADSHAW, KENNETH  
BUTLER, JACK  
CALLAHAN, DIAZ  
CARTWRIGHT, HAROLD  
CARTWRIGHT, MALCOLM  
CARTWRIGHT, WILLIAM  
CASE, H. O.  
CASTELLANOS, PEDRO  
CHURCHILL, JOHN  
COOK, MARY E.  
DAVIS, CLIFFORD  
DUBOSE, RAY  
EARDLEY, EDWIN

FARR, BILLY  
FARRIS, PERRIN  
FLEMING, DRUECILLO  
GARDNER, EDWARD  
GOMEZ, SOTERO  
GRAY, GLENN  
GRAY, LEONARD  
GREEN, EUGENE JR.  
HARR, GENE  
HART, VICTOR  
HOLMGREEN, WARREN  
HOWARD, PETE  
JEFFERY, JACK  
JOHNSON, ANDREW  
JONES, LEROY  
LANSFORD, HAROLD  
LOVE, RAYMOND  
MENDENHALL, GRANT  
MARNEY, HOUSTON  
MOGFORD, HAROLD  
MULLINS, JIM

MULLINS, JOHN  
NEW, LAXTON  
ORR, WILLIAM  
RECTOR, STEVE  
SCHMITZ, ROBERT  
SHIVELY, AARON  
SHIVELY, JAMES  
SORRELL, DELBERT  
SPIELMAN, BLAKE  
STONE, MARVIN  
TOCQUIGNY, BOBBY  
TUMLINSON, EARL  
TUMLINSON, RICHARD  
TURNER, HOWARD  
URIEGAS, MARCELO  
WARREN, L. A.  
WEBB, DAMON  
WEDDING, BRYAN  
WILLIAMS, GORDON  
WILLIAMS, VERNER  
WILLEMS, GEORGE



# IN MEMORIAM

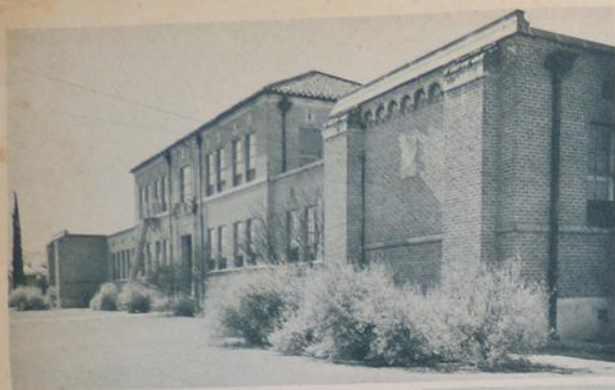


SON McALLISTON

1943

GLADYS INRIWOOD

1944



HIGH  
SCHOOL



CENTRAL  
WARD



JOSIE

EAST  
WARD







GYM

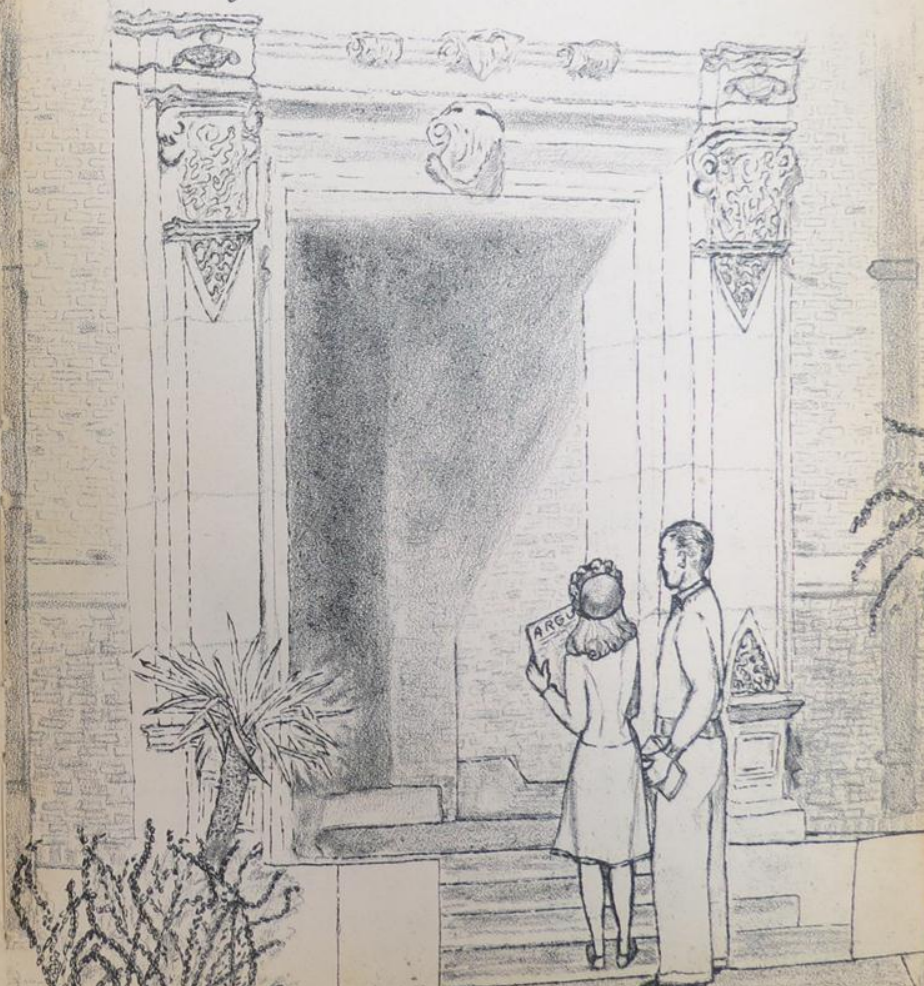


BAND  
HOUSE



GARAGE

ADMINISTRATION  
AND  
FACULTY





# SCHOOL BOARD

W.K. RUSSELL  
PRESIDENT



B.J. COOK  
F.J. DONALDSON  
SECRETARY

M.L. NORWOOD  
BEN PATTERSON



A.G. SMITH  
FINN WADE



## SUPERINTENDENT

In these troubled and unsettled times a staff of determined and zealous students, so representative of our student body, undertook the laborious task of editing this annual; dedicating it to our alumni in the service who are fighting for the things we love best - FREEDOM - the kind of freedom that only Americans can appreciate.

During this unparalleled era the student body has cooperated in every enterprise of the war effort: purchasing and selling war bonds and stamps, gathering scrap metal, assisting in jeep drives, holding victory concerts, participating in patriotic assembly programs, and engaging in the buy a plane campaign. Yes; in action, deeds, words, and spirit you have used your talents to <sup>further</sup> ~~future~~ the war effort so that the peace to come shall be everlasting.

May, before the editing of another year book, those to whom this book is dedicated will have finished a good job and again be enjoying the American Way of Life.

*R. E. Sullivan*

# PRINCIPALS



W. M. PRIDGEN

## HIGH SCHOOL



C. P. ULBRICH

## CENTRAL WARD



MRS. MAURINE GARDNER

## EAST WARD

# IFACULTY



Ruth Adams

Pearl Allee

Sally Burkett

Evelyn Carter



Annabelle Cathcart

R. H. Edwards

Mary Frazier

Zulema Guerrero



Georgie Hall

J. W. House

Oleta Hughes

Beth Jeffery



Mildred Lester

Grady Lester

Doris Mahon

Dora Meyers



# FACULTY



Lillian Moore  
Cornelia Patterson  
Elizabeth Quenny  
Genevieve Rhodes

Gladys Rodway  
Laura Rouse  
Elvira Silva  
Gertrude Sisk

Irene Smith  
P. E. Smith  
Louise Sullivan  
W. S. Taylor

Annie Louise Tuttle  
Sue Vandervoort  
Lora Vickery  
Edith Webb



# SENIORS



Secretary  
W. B. PALM



Sponsor  
GEORGIE HALL



Vice President  
VICTOR STONE



President  
TOM FARRIS



ANDERSON, SELMA JANE  
Program Chairman 1; Glee Club 1,2,3,4; H.E. Club 1,2; Folk Dance Club 1; Reading Club 3; Dramatic Club 2,3,4, (Secretary and Treasurer 4); One-Act Play 1; Reporter of Class 4; Band 1,2,3,4; Domino Club 4 (Reporter 4).



BAYLOR DAVID E.B.  
Band 3,4; Reading Club 3,4, (Pres.3).



BELL, DOROTHY  
Social Chairman 2; Program Chairman 4; H.E. Club 2,3,4, (District Parliamentarian 3); Press Club 4; Dance Club 2,3; Athletic Club 3; Pep Squad 2; Cheer Leader 3,4; Gun and Rod Club 3; F.F.A. Sweetheart 4; Glee Club 2,3,4, (Student Director 4); Annual Staff 4 (Editor of Staff 4).



BERUMEN, HERLINDA  
Spanish Club 2,3,4; Homemaking Club 1; Folk Dance Club 1,2; Pep Squad 1,2,3,4.



CANTU, BLANCA  
Homemaking Club 1,4; Spanish Club 2,3,4, (Pres. 4); Folk Dance Club 1,2; Pep Squad 1,2.



CANION, DARREL  
F.F.A. 1,2,3,4, (Treasurer 3, Watch Dog 4); Domino Club 2,3,4; Athletic Club 4.



CASTELLANOS, PEDRO  
Football 2,3; Spanish Club 2,3,4, (Secretary and Treasurer 4); F.F.A. 1,2,3; Athletic Club 1; Math Club 3.



COOK, ROBERT FRAZIER  
Football 4 (Mgr. 4); F.F.A. 1,2,3,4; Reading Club 4; Domino Club 3.





DAWKINS, FRANCES  
Pep Squad 2; Dance Club 1,2; H.E. Club 1,2,3,4;  
Press Club 4; Argus Staff 4; Volley Ball 3;  
Domino Club 3.

GARZA, TOM

Spanish Club 2,3,4; F.F.A. 1,2; Math Club 3



DICKENS, GEORGIE  
Gun and Rod Club 1,2; H.E. Club 1,2,3,4; Glee Club  
1,2,3,4; Dance Club 4(Reporter 4); Tennis Club 1,2;  
Band 1,2,3,4.

GRAY, LEATRICE

What's Right Club 1; Press Club 1,4(Humor  
Editor 1-4); Reading Club 3; Dramatic Club  
2,3,4(Student Director 4); Glee Club 1,2,  
3,4(Treasurer 4); Pep Squad 1,3,4(Manager 4);  
One-Act Play 1.



DURAN, FLORINDA  
Spanish Club 2,3,4(Reporter 4); Homemaking 1; Folk  
Dance Club 1,2.

HORTON, SYBIL

H.E. Club 1,2,3,4(Secretary 2,3); Press Club  
1; Flag Bearer 1; Majorette of Pep Squad  
2,3,4; Dance Club 2,4(President 4, Vice-  
President 2); Reading Club 3; Volley Ball  
1,2.



FARRIS, TOM  
President 2,4; Vice-President 1; Social Chairman  
3; Football 3,4; Basketball 2; Tennis Club 1,2;  
Gun and Rod 1,2,3; Athletic Club 3,4(President  
4); "C" Association 3; Best All-Around Boy 2;  
Band 1,2,3; Annual Staff 4; Orchestra 1.

HORTON, SYLVIA  
H.E. Club 1,2,3,4(Sergeant at Arms 3, Vice-  
President 2); Press Club 1; Flag Bearer 1;  
Majorette 2,3,4; Dance Club 2,4(President 2,  
Vice-President 4); Reading Club 3; Volley  
Ball 1,2.



LONG, FRANCES  
Student Council 4; Annual Staff 4; Reading Club 3,  
4; Curtain Club 4; Homemaking 1,2; Folk Dance Club  
1; Declamation 2.

MOORMAN, JEAN

H.E. Club 1,2,3,4; Folk Dance Club 1,2,4; Read-  
ing Club 2.



MARTINEZ, DORA  
Spanish Club 2,3,4; Homemaking 1; Pep Squad 1,2;  
Folk Dance Club 1,2.

MOWELS, VERA

Volley Ball 1,2,3; Glee Club 2,3,4; Gun & Rod  
Club 2,3; Pep Squad 3,4, (Cheer Leader 4); Press  
Club 4 (Typist) H.E. Club 1,2,4; Dance Club 3;  
Study Club 3.



MARTINEZ, JUAN  
Spanish Club 2,3,4(Reporter 4); Band 1,2,3; F.F.A.  
1,2.

MULLINS, BILL

Football 2,3,4(Capt. 4); Glee Club 1,2,3,4(Pres.  
3); Gun and Rod Club 1,3; Dramatic Club 1,2;  
Annual Staff 4; Athletic Club 2,3,4; Vice-Pres.  
3; Social Comm. 4; Freshman Favorite; "C" As-  
sociation 2,3; Secretary and Treasurer 1.



MOFFETT, KATHRYN  
Pep Squad 2; Dance Club 1,2; H.E. Club 1,2,3,4;  
Press Club 4; Argus Staff 4; Volley Ball 3; Dom-  
ino Club 3.

MUSGRAVE, JEANNE

H.E. Club 3,4; Press Club 4(Gossip Editor 4);  
Band 3,4; Glee Club 3,4; Spanish Club 3.





ORR, GUS  
F.F.A. 1,2; Athletic Club 1,3,4; Spanish Club 2,3;  
Gun and Rod Club 2.



PALM, W. B.  
Secretary and Treasurer 3,4; Tennis Club 1,2; Dramatics Club 1,2,3,4(Pres. 3,4); Band 1,2,3,4(Student Director 4); Gun and Rod Club 3; Glee Club 2,3,4(Secretary 4); Student Council 4; Athletic Club 4; Best All-Around 3; Most popular 4; F.F.A. 1,2; Reading Club 3; One-Act Play Contest 1; Orchestra 1.



PATRICK, MARY ELLEN  
Secretary and Treasurer 2; Band 2,3,4; Pep Squad 1; H.E. Club 2,4; What's Right Club 1; Tennis Club 1; Gun and Rod Club 3; Athletic Club 3; Dance Club 2; Press Club 4.



PATRICK PATRICIA  
Band 2,3,4; Pep Squad 1; What's Right Club 1; Dance Club 1; H.E. Club 2,4(Program Chairman 4, Song Leader 4); Gun and Rod Club 3; Reading Club 3; Social Chairman 4; Best All-Around 3.

SORRELL, JOHN  
F.F.A. 1,2,3,4; Athletic Club 2,3,4; Domino Club 3,4.

RIECKER, MARGIE

Folk Cance Club 1; H.E. Club 1,2,3,4(Social Chairman 3, Vice-Pres. 4); Band 1,2,3,4(Twirlers 1,2); Reading Club 3; F.F.A. Sweetheart 3; Press Club 4(Editor-in-chief 4); Orchestra 1.

RUFF, MARTHA

H.E. Club 1,2,3,4(Vice-Pres. 1, Sgt.Arms 3); Press Club 1,4(Secretary and Treasurer 4); F.F.A. Sweetheart 4; Band 1,2; Pep Squad 3,4(Cheer Leader 4); Glee Club 3,4; Orchestra 1; Dance Club 2,3; Most Popular Girl 1,2; Volley Ball 1,2.

SMITH, RUBY

H.E. Club 1,3,4 (Pres. 4, Song Leader 1); Gun and Rod Club 1,2,3; Glee Club 2,4; Athletic Club 3; Folk Dance Club 2; Band 1,2,3,4(Drum Major 2,3,4); Most Popular Girl 3,4.



SPEER, SHIRLEY BETH

H.E. Club 1, 2,3(Vice-Pres. 3, Program Chairman 1,2); Dramatic Club 2,3,4(Vice-Pres. 3,4); Tennis Club 1; Press Club 4(Assistant Editor 4); Band 1,2,3,4(Drum Major of Band 2,3,4); Gun and Rod Club 1; Best All-Around Girl 4.



STONE, VICTOR

Vice-Pres. 4; Vice-Pres. of Student Council 4; Football 4; Athletic Club 4; Band 1,2; Gun and Rod Club 1, 2, 3; Best All-Around Boy 4.



WARD, BOB

Pres. 3; Vice-Pres. 2; Gun and Rod 1,2,3; Football 2,3,4; Orchestra 1; Basketball 2; Most Popular Boy 2,3; Tennis Club 2; Band 1,2; Athletic Club 3,4; Glee Club 2,4; "C" Association 2,3; Student Council 4(Pres. of Council 4).



YOUNGBLOOD, LOU

Reading Club (Vice-Pres. 3); Dance Club 2,4(Secretary and Treasurer 4); Study Club 2,3; H. E. Club 4; Drum Major of Pep Squad 2,3,4.







President  
WILLIAM PETTY



Vice President  
COLEMAN WEDDING



Secretary  
HELEN WILLIAMS



Sponsor  
JESSE HOUSE



KARL AYERS



O.D. AYERS



VIRGINIA BLACKARD



MARY RUTH BOSTIC



JUNIOR BRASWELL



BILLIE RUTH BROWN

MARILLYN CARTWRIGHT



ARLEN DAVIS



BILLY GRISSOM



JESSE HARRIS



MARY LEE McFARLAND



WILLIAM PETTY





WILLIE FRED RANKIN



DOROTHY STOBAUGH



GLORIA SCHMITT

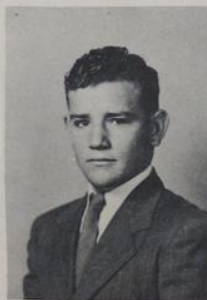


EDWARD TAYLOR

# SOPHOMORES



ORA MAE TAYLOR



BOB TUMLINSON



GEORGE UMPHRESS



President  
FRAZIER WARD



Secretary  
BARBARA WILSON



Vice President  
JOE MULLINS



Sponsor  
WILLIAM TAYLOR



DELL WADE



COLEMAN WEDDING



BEATRICE LOU WHITE



HELEN MARIE WILLIAMS





Elbert Bennett



Ward Box



Juan Galan



Jesus Gomez



Preston Lester



Don E. McMains



Beverly Stone



Joe Tocquigny



Kenneth Branch



Clara Nell Bright



Anice Green



Dale Haston



Artie Lee Moorman



Robert Nichols



Charles Vandervoort



Lawrence Vivian



Jack Canion



Rumaldita Diaz



Charles Huffman



Albert Ivy



John Norwood



Nellie Faye Phenix



Lucille Welborn



Nookie White



Earline Dickens



Maria Garza



Starling Jackson



Donald Kellogg



Adolfo Ramos



Charles Scoggin



Gerald Whitney



Bill Willems



gladys rodway  
sponsor

# FRESHMEN



jean leonard  
president



johnnie taylor  
secretary



helen joyce frazier  
vice-president



lubie ayers



frances bradshaw



fred burns



gladys canion



charles cathcart



audavee cook



jim davidson



donald dickens



karl dickens



mary esther dubose



david fain



bobby foster



enrique galan



mitzi gray



john lee harris



dolores hobbs



bobby howard



bessie janavares



alvin jones



jimmy lansford



leon logan



minnie martinez



claud mathis





virginia mills



alonso perez



e.l. pond



mary dale potter



emelio reyes



horacio rodriguez



jimmy scoggin



mose sharp



lee silva



william sweet



sid thomas



jackson tollett



marie turner



mayetta webb



gustavo zambrano

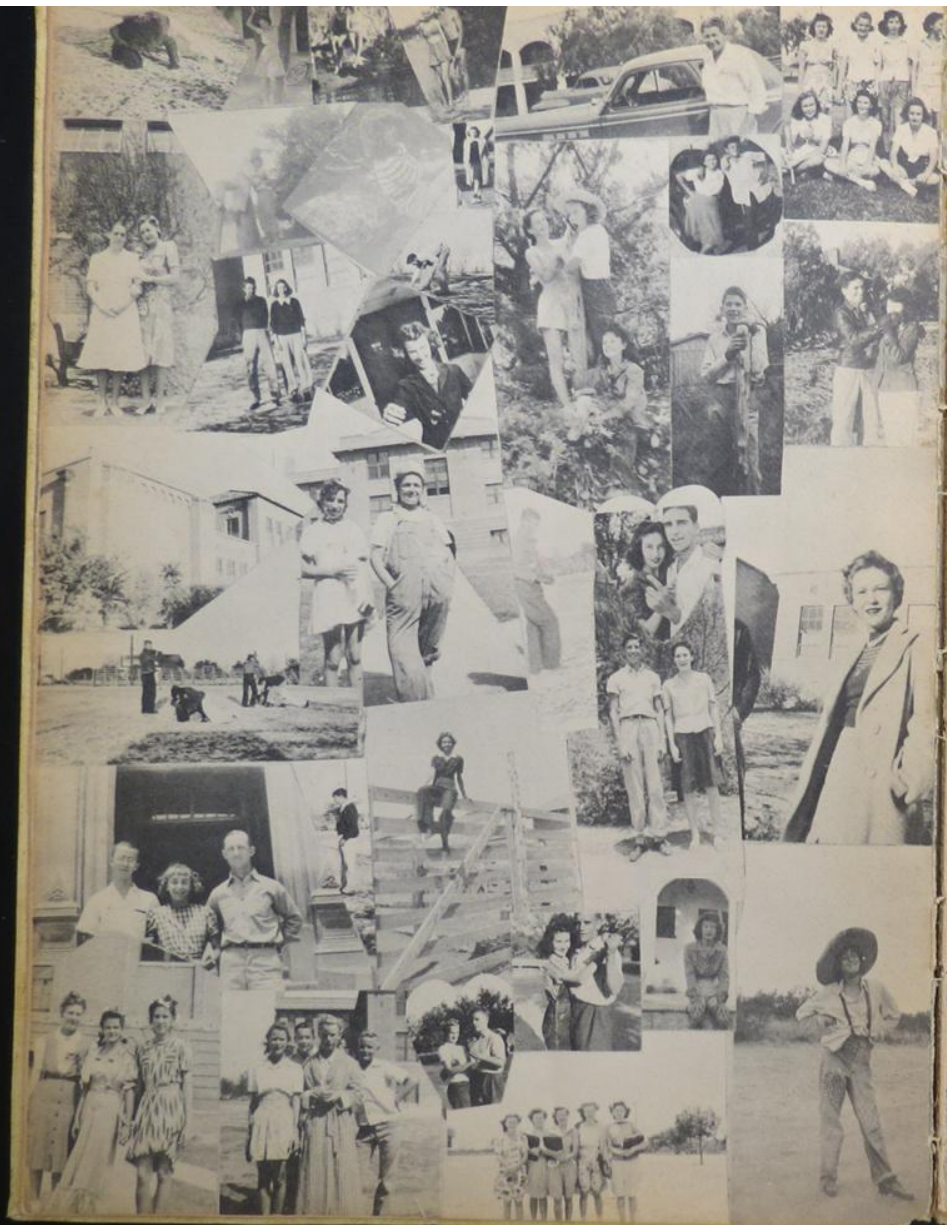


# SENIOR BABY PICTURES

1. RUBY SMITH
2. JEANNE MUSGRAVE
3. SELMA JANE ANDERSON
4. KATHYRN MOFFETT
5. FRANCES LONG
6. LEATRICE GRAY

7. VERA MOWELS
8. FRANCES DAWKINS
9. SHIRLEY SPEER, PAT AND MARY ELLEN PATRICK
10. MARGIE RIECKER
11. MARTHA RUFF
12. VICTOR STONE



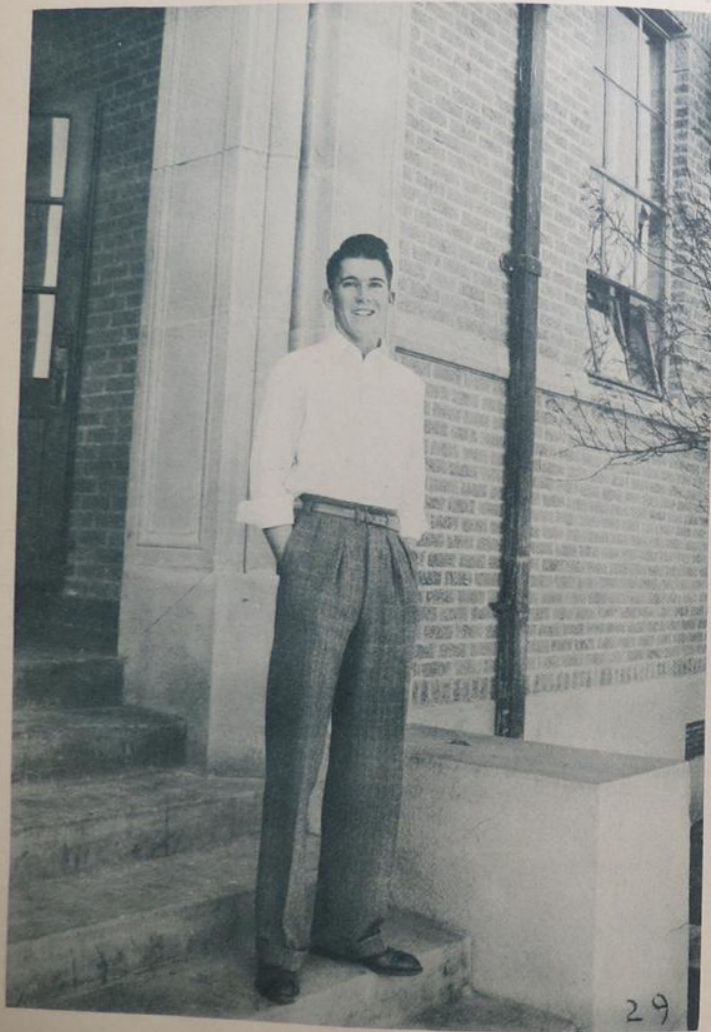


# PERSONALITIES





# BEST ALL AROUND BOY



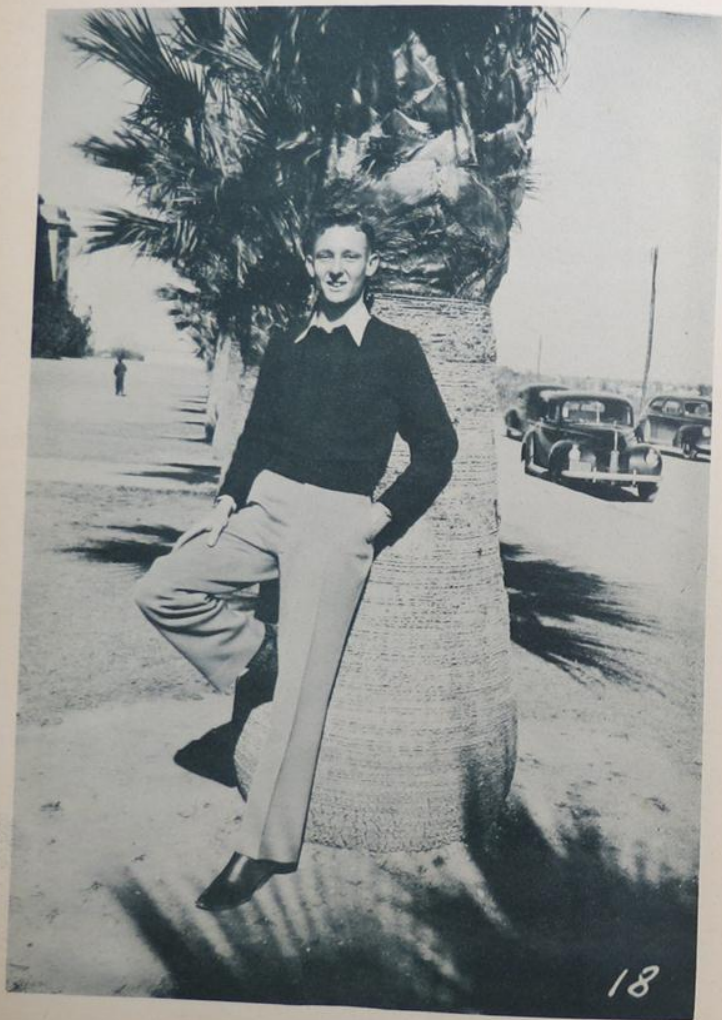
VICTOR STONE

# BEST ALL AROUND GIRL



SHIRLEY BETH SPIER

# MOST POPULAR BOY



18

W. B. PALM

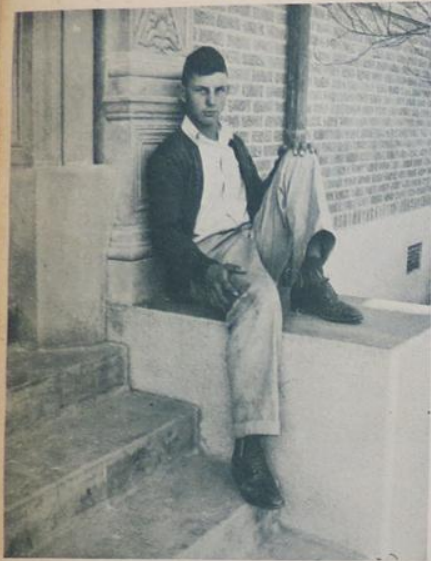
# MOST POPULAR GIRL



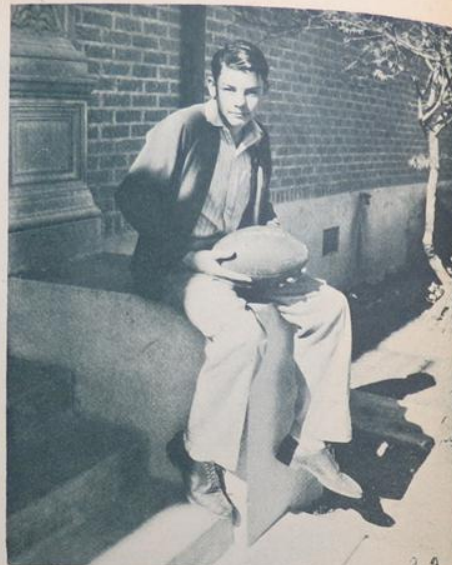
RUBY SMITH



# FAVORITE BOYS



SID  
THOMAS  
FRESHMAN



WARD  
BOX  
FRESHMAN



JESSIE HARRIS  
JUNIOR

# FAVORITE GIRLS



LUBIE  
AYRES  
FRESHMAN



BARBARA  
WILSON  
FRESHMAN



BEATRICE LOU WHITE  
JUNIOR



# WHO'S WHO



SENIORS

GLUS  
CIR

FRANCES  
LONG



JUNIORS

STOBAUGH

JESSE  
HARRIS



SOPHOMORES

EARLENE  
DICKENS  
JOE  
MULLINS



FRESHMEN

JEAN  
LEONARD

JIMMY  
LANSFORD

# ACTIVITIES





# STUDENT COUNCIL



VICE-PRESIDENT VICTOR STONE



PRESIDENT BOB WARD



SECRETARY BARBARA WILSON



W.B. PALM



FRANCES LONG



HELEN WILLIAMS



BEATRICE LOU WHITE



JESSE HARRIS



JOE MULLINS



BOBBY FOSTER



JESSE HOUSE  
SPONSOR



GEORGIA HALL  
SPONSOR

# ANNUAL

# STAFF

BARBARA WILSON  
Assistant Editor



DOROTHY BELL  
Editor



FRANCES LONG  
Business Manager

BEATRICE WHITE  
Asst. Business Manager



BILL MULLINS  
Sports Editor



MARILLYN CARTWRIGHT  
Snapshot Editor



TOM FARRIS  
Class Editor



DELL WADE  
Club Editor



MARION WHITE  
Art Editor



JIM DAVIDSON - Photographer



DAVID BAYLOR  
Art Editor



JANE ANDERSON  
Typist



GLADYS RODWAY  
Sponsor



ELBERT BENNETT  
Typist





# TPIRESS CLUB

Editor  
MARGIE RIECKER  
Sponsor  
MR. PRIDGEN



# CURTAIN CLUB

President  
W. B. PALM  
Sponsor  
MRS. RODWAY

# READING CLUB

President  
GLORIA SCHMITT  
Sponsor  
MISS MAHON



# DANCE CLUB

President  
SYBIL HORTON  
Sponsor  
MISS VICKERY



# SPANISH CLUB

President  
BLANCA CANTU  
Sponsor  
MR. EDWARDS



# DOMINO CLUB

President  
WHEELER PETTY  
Sponsors  
MISS RHODES  
MR. LESTER







# F. F. A.

President  
WILLIAM PETTY

Sponsor  
MR. LESTER



# BAND

Student Director

W. B. PALM

Director  
MRS. BURKETT

# ATHLETIC CLUB

President  
TOM FARRIS

Sponsors  
MR. TAYLOR  
MR. HOUSE



# DRUM MAJORS

SHIRLEY BETH SPEER

RUBY SMITH



# F. H. T.

President  
RUBY SMITH

Sponsor  
MISS RHODES



# GLEE CLUB

Student Director  
DOROTHY BELL

Accompanist  
DELL WADE

Sponsor  
MRS. HALL





# PEP SQUAD

Sponsor:  
MRS. RODWAY

# LEADERS

BARBARA WILSON  
VERA MOWELS  
DOROTHY BELL  
MARTHA RUFF



# DRUM MAJOR AND TWIRLER

SYBIL HORTON  
LOU YOUNGBLOOD  
SYLVIA HORTON







Coach Taylor



Assistant Coach House

Despite the fact that the Wildcats won only two games and tied two in the football season of 1943, the season wasn't considered a complete failure.

Lack of experience and weight played a major part in the defeats by Hondo, Uvalde, Devine, and Eagle Pass.

There was a large squad out for football, but most of the boys were inexperienced and small. They did show great improvement during the season.

This season climaxed the high school football careers of the following boys: Bill Mullins, Tom Ferris, Bob Ward, Gus Orr, Bob Tumlinson, Jesus Gomez, Darrel Canion, and Robert Cook.

The Wildcats have the brightest prospects for a successful season next year and year after next. The bulk of the squad being sophomores who will have had two years experience when they reach their senior year. Added to that group will be some of the best freshman prospects in years, to round out the squad.

For those finishing this year, we wish them well; for those returning, great things are expected of them next year, and still greater things in the season of 1945, a championship in the making.



Captain Bill Mullins



Robert Cook, Manager



**Carrizo Wins From  
Crystal City  
On Penetrations**

[illegible]







